

WAAS CH 81802 W23A	APP CRS 229°	Rwy Ldg TDZE 296 Apt Elev 306	5819
--	------------------------	---	-------------

RNAV (GPS) Z RWY 23

FREDERICK MUNI (FDK)

RNP APCH.

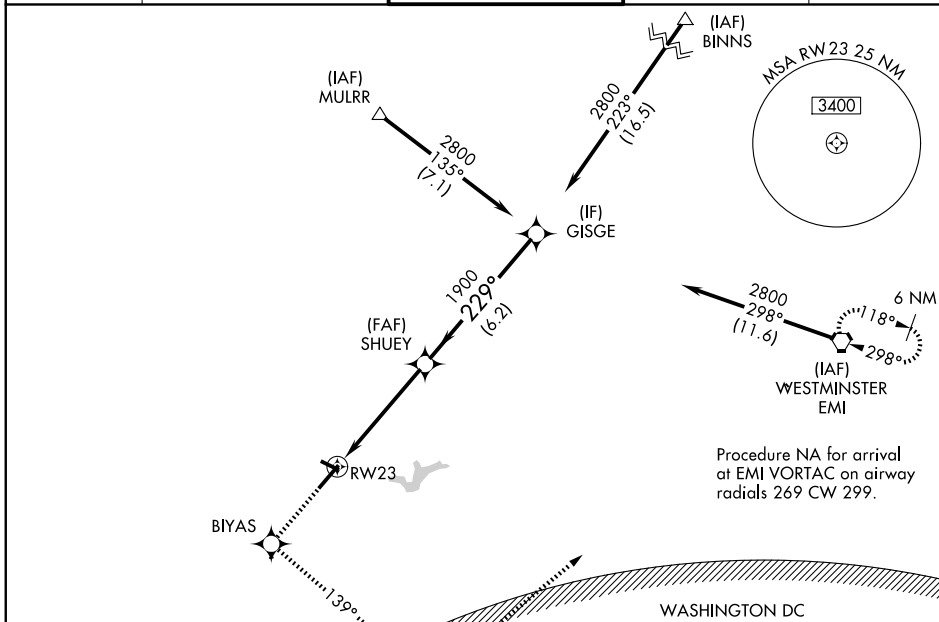
⚠ Rwy 23 helicopter visibility reduction below 3/4 SM NA. Circling Rwy 30 NA at night. For uncompensated Baro-VNAV systems, LNAV/VNAV NA below -15°C or above 54°C. Inop table does not apply to LPV, LNAV/VNAV all Cats, and LNAV Cat C.

ODALS



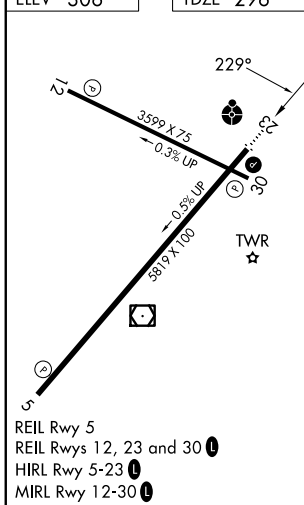
MISSED APPROACH: Climb to 3000 direct BIYAS WP and via 139° track to FEDIT WP and via 059° track to EMI VORTAC and hold.

ATIS 124.875	POTOMAC APP CON 126.1 338.25	FREDERICK TOWER ★ 132.4 (CTAF)	GND CON 127.425	UNICOM 122.95
------------------------	--	--	---------------------------	-------------------------



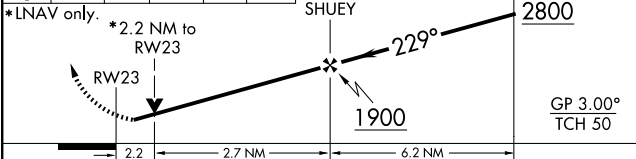
Procedure NA for arrival at EMI VORTAC on airway radials 269 CW 299.

ELEV 306	TDZE 296
----------	----------



WASHINGTON DC METROPOLITAN SFRA
WARNING -- WASHINGTON DC SFRA, CTC POTOMAC APP CON

3000 BIYAS	FEDIT	EMI	VGSI and RNAV glidepath not coincident (VGSI Angle 3.00/TCH 54).
↑	tr 139°	tr 059°	



CATEGORY	A	B	C	D
LPV DA	690-1½ 394 (400-1½)			
LNAV/VNAV DA	1020-2½ 724 (800-2½)			
LNAV MDA	1020-¾ 724 (800-¾)	1020-2 724 (800-2)	1020-2½ 724 (800-2½)	1020-2¾ 724 (800-2¾)
CIRCLING	1020-1 714 (800-1)	1100-2¼ 794 (800-2¼)	1200-2¾ 894 (900-2¾)	

NE-3, 11 JUN 2026 to 09 JUL 2026

NE-3, 11 JUN 2026 to 09 JUL 2026