

# TERPZ EIGHT DEPARTURE (RNAV)

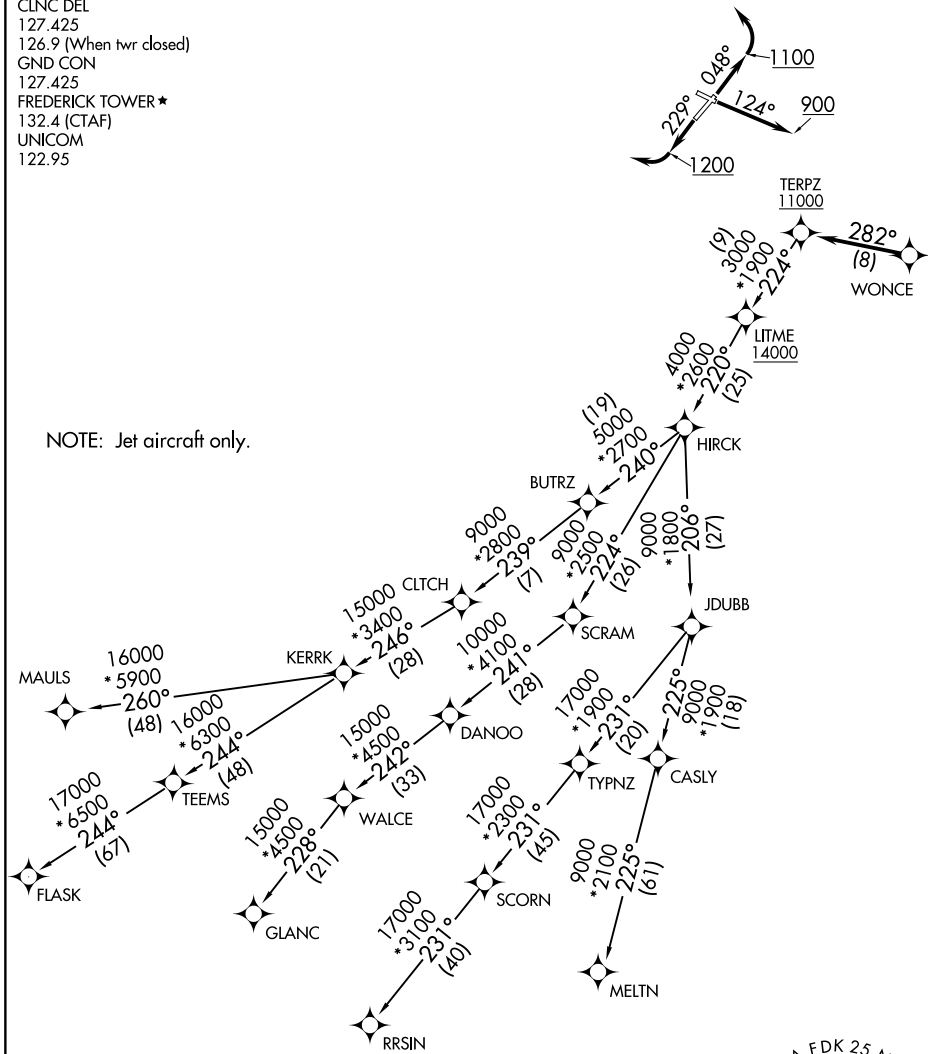
FREDERICK, MARYLAND

POTOMAC DEP CON  
 126.1 338.25  
 ATIS  
 124.875  
 CLNC DEL  
 127.425  
 126.9 (When twr closed)  
 GND CON  
 127.425  
 FREDERICK TOWER ★  
 132.4 (CTAF)  
 UNICOM  
 122.95

RNAV 1 - DME/DME/IRU or GPS.

RADAR required.

**TOP ALTITUDE:**  
**17000**

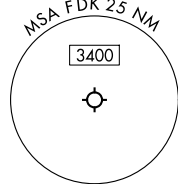


NOTE: Jet aircraft only.

**TAKEOFF MINIMUMS:**

- Rwy 5: 400-3 or Standard with minimum climb of 255'/NM to 600.
- Rwy 12: 500-2¾ or Standard with minimum climb of 410'/NM to 2400.
- Rwy 23: Standard.
- Rwy 30: Standard with minimum climb of 340'/NM to 2400.

NOTE: Chart not to scale.



# TERPZ EIGHT DEPARTURE (RNAV)

(TERPZ8.TERPZ) 11JUL24

FREDERICK, MARYLAND  
FREDERICK MUNI (F'DK)

NE-3, 11 JUN 2026 to 09 JUL 2026

NE-3, 11 JUN 2026 to 09 JUL 2026