

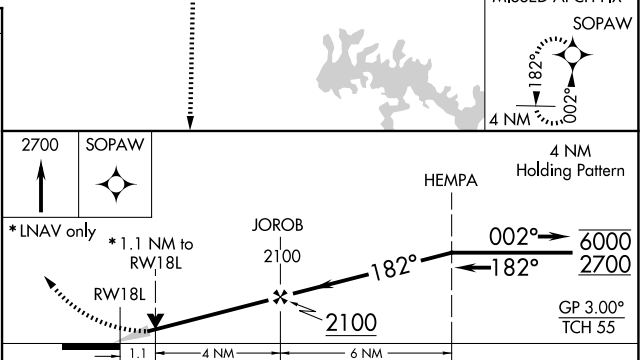
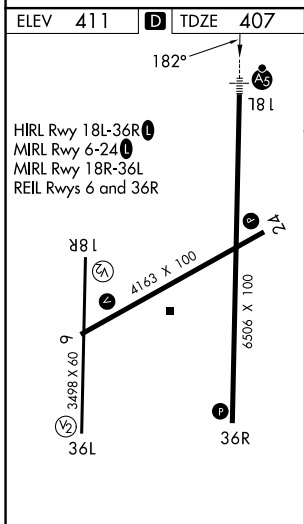
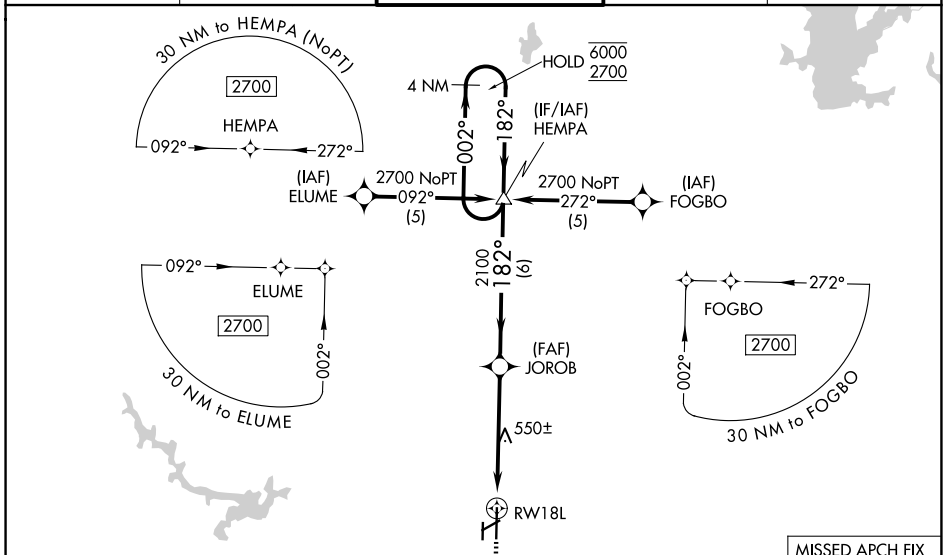
APP CRS	Rwy Ldg	6506
182°	TDZE	407
	Apt Elev	411

RNAV (GPS) RWY 18L

SOUTHERN ILLINOIS (MDH)

RNP APCH.		MALSR		MISSED APPROACH: Climb to 2700 direct SOPAW and hold.	
<p>▼ Circling Rwy 6, 36L NA at night.</p> <p>▲ For uncompensated Baro-VNAV systems, LNAV/VNAV NA below -15°C or above 54°C.</p>					

ATIS 119.725	KANSAS CITY CENTER 127.475 346.275	SOUTHERN TOWER * 125.35 (CTAF) 0 322.4	GND CON 121.8	UNICOM 122.95
------------------------	--	--	-------------------------	-------------------------



CATEGORY	A	B	C	D
LNAV/VNAV DA	804- ⁵ / ₈		397 (400- ⁵ / ₈)	
LNAV MDA	800- ¹ / ₂	393 (400- ¹ / ₂)	800- ⁵ / ₈	393 (400- ⁵ / ₈)
CIRCLING	900-1 489 (500-1)	920-1 509 (600-1)	1180-2 ¹ / ₄ 769 (800-2 ¹ / ₄)	1180-2 ¹ / ₂ 769 (800-2 ¹ / ₂)

EC-3, 11 JUN 2026 to 09 JUL 2026

EC-3, 11 JUN 2026 to 09 JUL 2026