

WAAS CH 82519 W05A	APP CRS 054°	Rwy Idg TDZE Apt Elev	5997 31 31
--	------------------------	-----------------------------	---------------------------------------

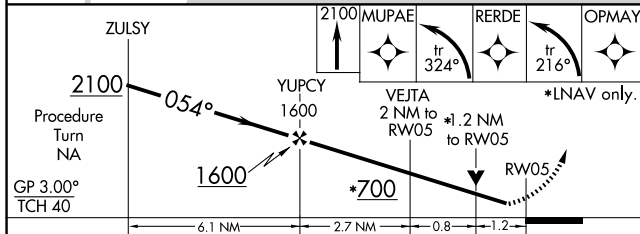
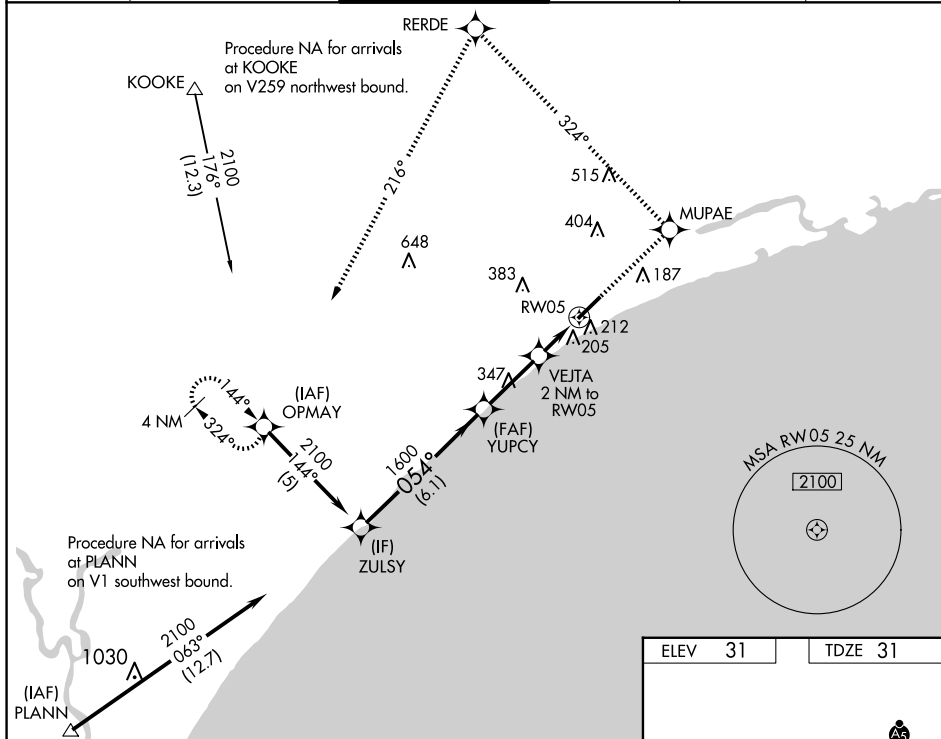
RNAV (GPS) RWY 5

GRAND STRAND (CRE)

▼ For uncompensated Baro-VNAV systems, LNAV/VNAV NA below -15°C (5°F) or above 48°C (118°F). DME/DME RNP-0.3 NA. Visibility reduction by helicopters NA. When local altimeter setting not received use Myrtle Beach Intl altimeter setting and increase all DA 31 feet and all MDA 40 feet. VDP and Baro-VNAV NA with Myrtle Beach Intl altimeter setting.

▲ MISSED APPROACH: Climb to 2100 direct MUPAE and left turn on track 324° to RERDE and left turn on track 216° to OPMAY and hold.

ATIS 119.625	MYRTLE BEACH APP CON* 119.2 350.3	STRAND TOWER* 124.6 (CTAF) 0 257.6	GND CON 121.8 257.6	CLNC DEL 121.8	UNICOM 122.95
------------------------	---	--	-------------------------------	--------------------------	-------------------------



ELEV 31	TDZE 31
---------	---------

REIL Rwy 5 0

HIRL Rwy 5-23 0

5997 x 100

TWR 107

110

054° to RW05

CATEGORY	A	B	C	D
LPV DA		281-1	250 (300-1)	
LNAV/VNAV DA		496-1¾	465 (500-1¾)	
LNAV MDA	460-1	429 (500-1)	460-1½ 429 (500-1½)	460-1½ 429 (500-1½)
CIRCLING	520-1	489 (500-1)	720-2 689 (700-2)	720-2½ 689 (700-2½)

SE-2, 11 JUN 2026 to 09 JUL 2026

SE-2, 11 JUN 2026 to 09 JUL 2026