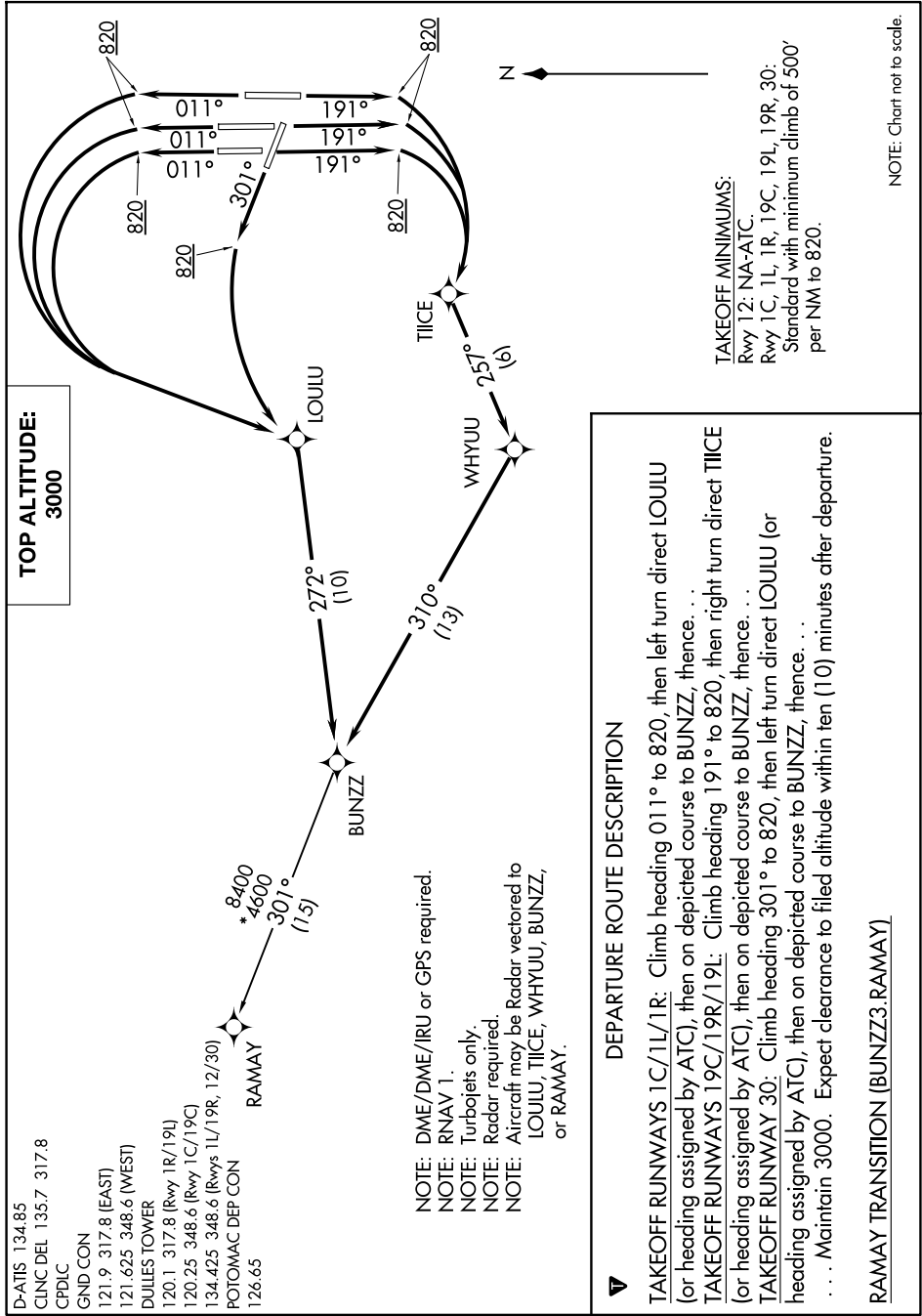


# BUNZZ THREE DEPARTURE (RNAV)

NE-3, 11 JUN 2026 to 09 JUL 2026



- D-ATIS 134.85
- CINC DEL 135.7 317.8
- CPDLC
- GND CON
- 121.9 317.8 (EAST)
- 121.625 348.6 (WEST)
- DULLES TOWER
- 120.1 317.8 (Rwy 1R/19L)
- 120.25 348.6 (Rwy 1C/19C)
- 134.425 348.6 (Rwys 1L/19R, 12/30)
- POTOMAC DEP CON
- 126.65

# BUNZZ THREE DEPARTURE (RNAV)

**DEPARTURE ROUTE DESCRIPTION**

**TAKEOFF RUNWAYS 1C/1L/1R:** Climb heading 011° to 820, then left turn direct LOULU (or heading assigned by ATC), then on depicted course to BUNZZ, thence. . .

**TAKEOFF RUNWAYS 19C/19R/19L:** Climb heading 191° to 820, then right turn direct TIICE (or heading assigned by ATC), then on depicted course to BUNZZ, thence. . .

**TAKEOFF RUNWAY 30:** Climb heading 301° to 820, then left turn direct LOULU (or heading assigned by ATC), then on depicted course to BUNZZ, thence. . .

. . . Maintain 3000. Expect clearance to filed altitude within ten (10) minutes after departure.

**RAMAY TRANSITION (BUNZZ3.RAMAY)**

NE-3, 11 JUN 2026 to 09 JUL 2026

NOTE: Chart not to scale.