

LOC/DME I-SGC 110.1 Chan 38	APP CRS 191°	Rwy Ldg 11500 TDZE 302 Apt Elev 312
---	------------------------	--

ILS RWY 19L (SA CAT II)

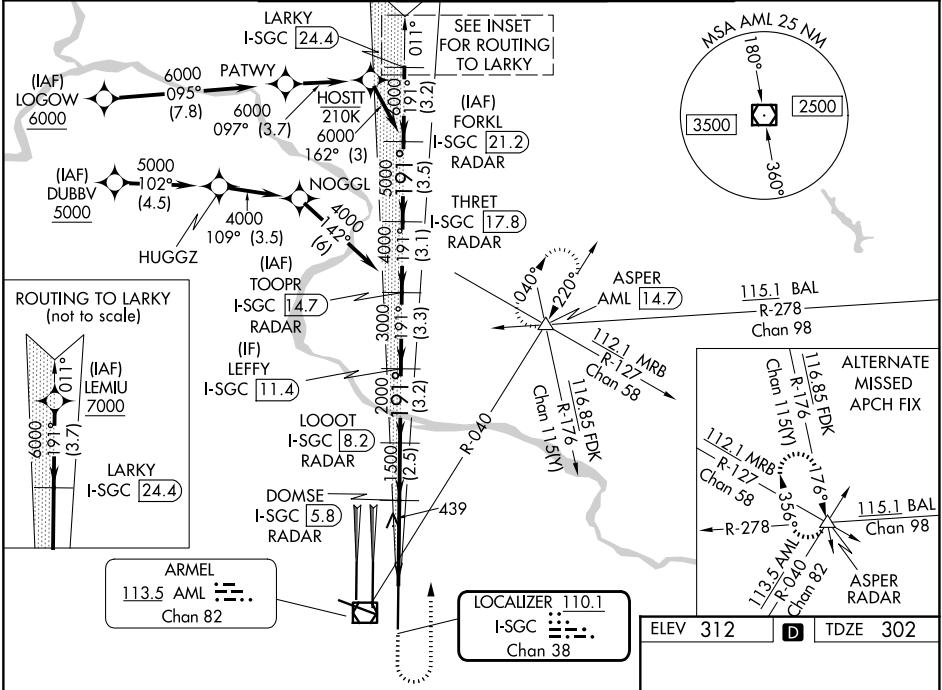
WASHINGTON DULLES INTL (IAD)

RNP APCH - GPS. From LOGOW, or DUBBV, or LEMIU.
 DME or RADAR required. RADAR required for procedure entry at LEMIU.
 Simultaneous approach authorized.
 Requires specific OPSPEC, MSPEC, or LOA approval.



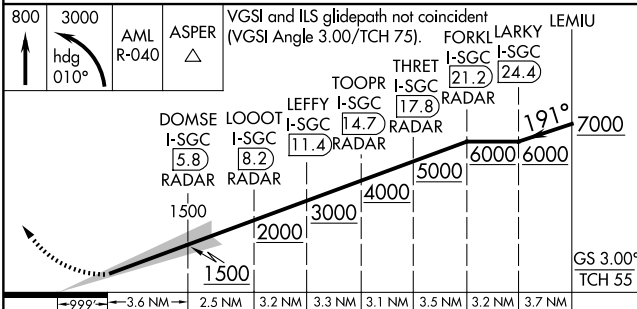
MISSED APPROACH: Climb to 800 then climbing left turn to 3000 on heading 010° and on AML VOR/DME R-040 to ASPER INT/AML 14.7 DME and hold.

D-ATIS 134.85	POTOMAC APP CON 120.45 306.925 (241°-330°) 128.525 306.925 (091°-240°) 126.1 338.25 (331°-090°)	DULLES TOWER 120.1 317.8 (Rwys 1R/19L) 120.25 348.6 (Rwy 1C/19C) 134.425 348.6 (Rwys 1L/19R and 12/30)	GND CON 121.9 317.8 (EAST) 121.625 348.6 (WEST)
-------------------------	---	--	---



NE-3, 11 JUN 2026 to 09 JUL 2026

NE-3, 11 JUN 2026 to 09 JUL 2026

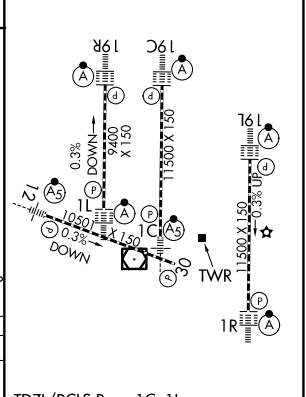


800	3000	AML R-040	ASPER	VCSI and ILS glidepath not coincident (VCSI Angle 3.00/TCH 75).	FORKL	LARKY	LEMIU
-----	------	-----------	-------	---	-------	-------	-------

CATEGORY	A	B	C	D
----------	---	---	---	---

S-ILS 19L RA 100/12 100 DA 402

ELEV 312	TDZE 302
----------	----------



TDZL/RCLS Rwys 1C, 1L, 1R, 12, 19C and 19R
 REIL Rwy 30
 HIRL all rwys