

LOC/DME I-HAD <b>110.1</b> Chan 38	APP CRS <b>011°</b>	Rwy Ldg TDZE Apt Elev <b>11500</b> <b>312</b> <b>312</b>
--	------------------------	---

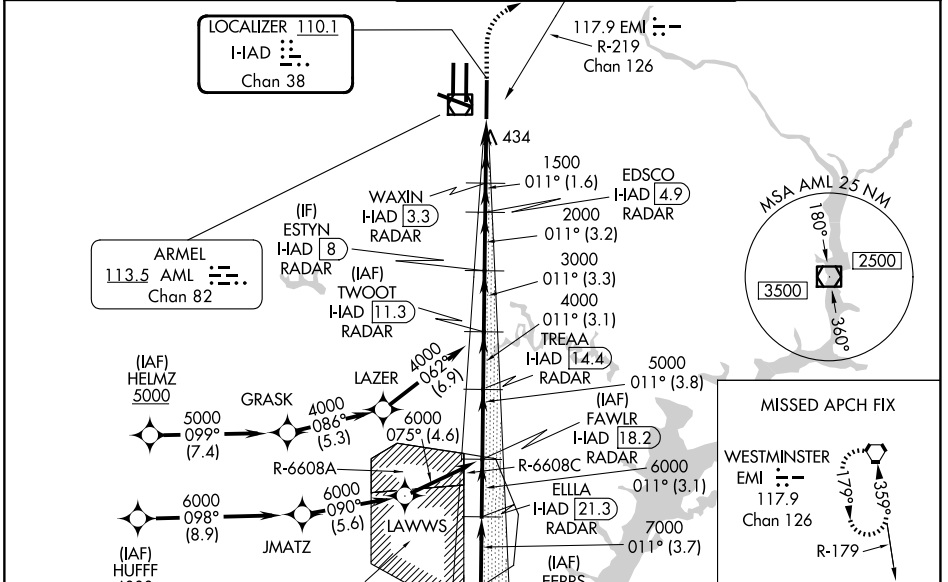
# ILS RWY 1R (CAT II & III)

WASHINGTON DULLES INTL (IAD)

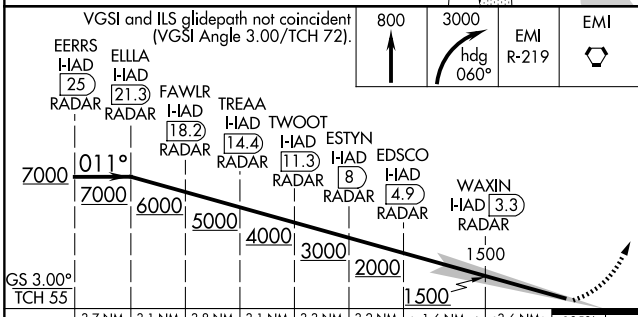
RNP APCH-GPS. From HELMZ, or HUFFF.  
DME or RADAR required.  
RADAR required for procedure entry at EERRS.  
Simultaneous approach authorized.

ALSF-2  
MISSED APPROACH: Climb to 800 then climbing right turn to 3000 on heading 060° and EMI VORTAC R-219 to EMI VORTAC and hold.

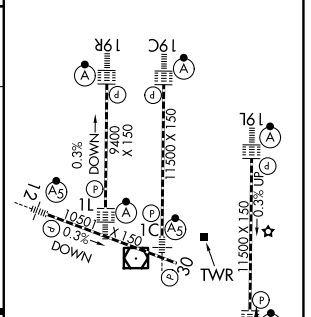
D-ATIS <b>134.85</b>	POTOMAC APP CON <b>120.45 306.925</b> (241°-330°) <b>128.525 306.925</b> (091°-240°) <b>126.1 338.25</b> (331°-090°)	DULLES TOWER <b>120.1 317.8</b> (Rwy 1R/19L) <b>120.25 348.6</b> (Rwy 1C/19C) <b>134.425 348.6</b> (Rwys 1L/19R and 12/30)	GND CON <b>121.9 317.8</b> (EAST) <b>121.625 348.6</b> (WEST)
-------------------------	---	---	---



ELEV 312	TDZE 312
----------	----------



861	661
-----	-----



CATEGORY	A	B	C	D
S-ILS 1R	CAT II RA 94/12 100 DA 412			
S-ILS 1R	CAT III RVR 06			

TDZL/RCLS Rwys 1C, 1L, 1R, 12, 19C and 19R  
REIL Rwy 30  
HIRL all rwys

## CATEGORY II & III ILS - SPECIAL AIRCREW & AIRCRAFT CERTIFICATION REQUIRED

NE-3, 11 JUN 2026 to 09 JUL 2026

NE-3, 11 JUN 2026 to 09 JUL 2026