

RNAV (RNP) Z RWY 19C

WASHINGTON DULLES INTL (IAD)

APP CRS	Rwy Ldg	11089
191°	TDZE	272
	Apt Elev	312

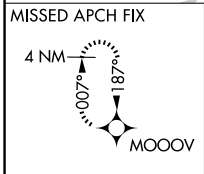
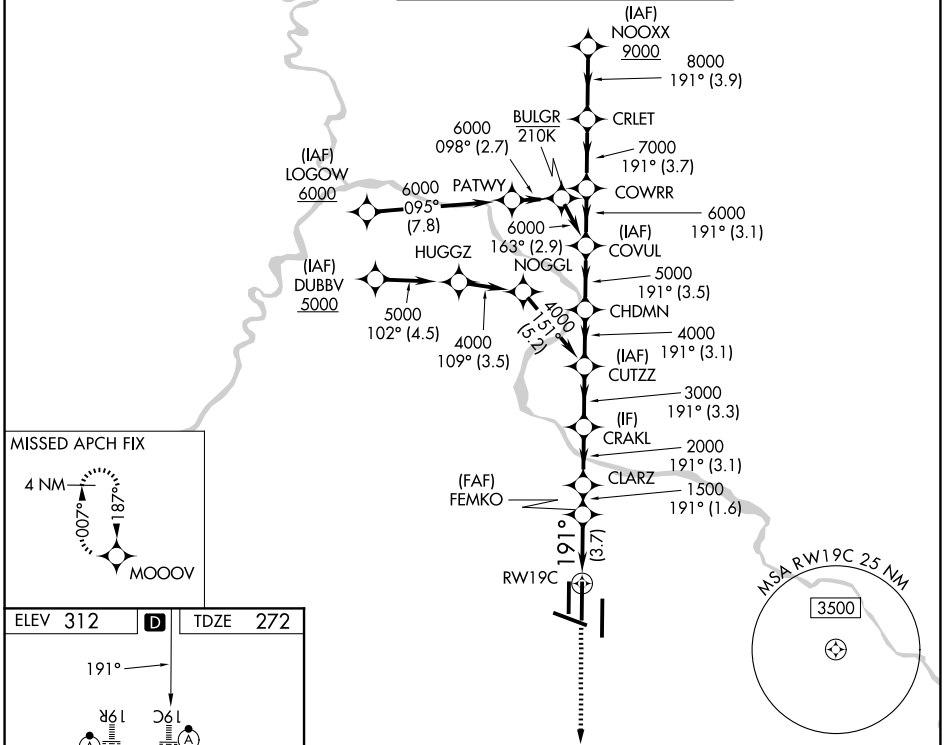
RNP AR APCH - GPS.

▼ For uncompensated Baro-VNAV systems, procedure NA below -13°C or above 54°C. Simultaneous approach authorized. For inop ALS, increase RNP 0.11 visibility all Cats to RVR 4500, and RNP 0.25 visibility all Cats to RVR 5500.

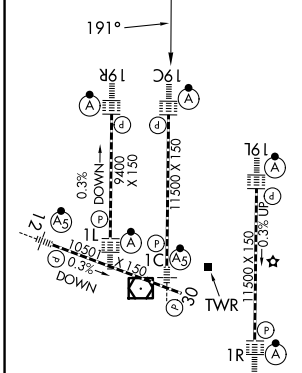
ALSF-2

MISSED APPROACH: Climb to 3000 direct MOOOV and hold.

D-ATIS	POTOMAC APP CON	DULLES TOWER	GND CON
134.85	120.45 306.925 (241°-330°)	120.1 317.8 (Rwy 1R/19L)	121.9 317.8 (EAST)
	128.525 306.925 (091°-240°)	120.25 348.6 (Rwy 1C/19C)	121.625 348.6 (WEST)
	126.1 338.25 (331°-090°)	134.425 348.6 (Rwys 1L/19R and 12/30)	



ELEV 312	D	TDZE 272
----------	----------	----------



TDZL/RCLS Rwys 1C, 1L, 1R, 12, 19C and 19R
REIL Rwy 30
HIRL all rwys

3000 MOOOV VGSI and RNAV glidepath not coincident (VGSI Angle 3.00/TCH 72).

	FEMKO	CLARZ	CRAKL	CUTZZ	CHDMN	COVUL	COWRR	CRLET	NOOXX
	1500	2000	3000	4000	5000	6000	7000	8000	9000
	3.7 NM	1.6 NM	3.1 NM	3.3 NM	3.1 NM	3.5 NM	3.1 NM	3.7 NM	3.9 NM

GP 3.00° TCH 54

CATEGORY	A	B	C	D
RNP 0.11 DA		554/24	282 (300-½)	
RNP 0.25 DA		624/30	352 (400-¾)	
RNP 0.30 DA		702/40	430 (400-¾)	

AUTHORIZATION REQUIRED

NE-3, 11 JUN 2026 to 09 JUL 2026

NE-3, 11 JUN 2026 to 09 JUL 2026