

APP CRS	Rwy Ldg	<b>9400</b>
<b>191°</b>	TDZE	<b>278</b>
	Apt Elev	<b>312</b>

# RNAV (RNP) Z RWY 19R

WASHINGTON DULLES INTL (IAD)

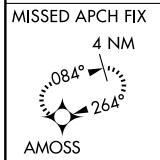
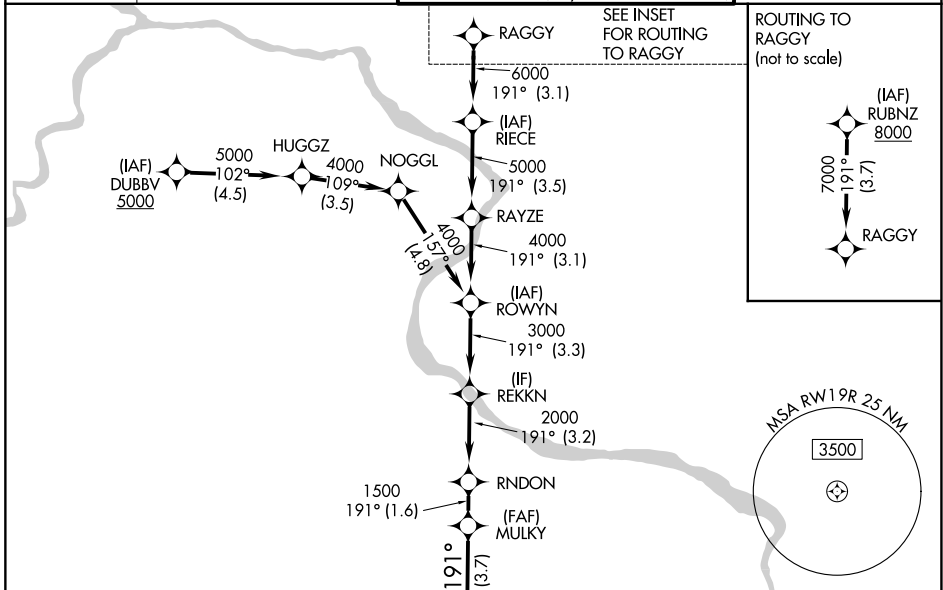
RNP AR APCH - GPS.

▼ For uncompensated Baro-VNAV systems, procedure NA below -13°C or above 54°C. Simultaneous approach authorized. For inop ALS, increase RNP 0.30 visibility all Cats to RVR 5500.

ALSF-2

MISSED APPROACH:  
 Climb to 800 then climbing right turn to 3000 direct AMOSS and hold.

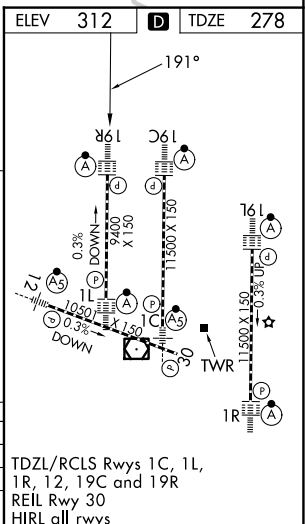
D-ATIS	POTOMAC APP CON	DULLES TOWER	GND CON
<b>134.85</b>	<b>120.45 306.925</b> (241°-330°)	<b>120.1 317.8</b> (Rwy 1R/19L)	<b>121.9 317.8</b> (EAST)
	<b>128.525 306.925</b> (091°-240°)	<b>120.25 348.6</b> (Rwy 1C/19C)	<b>121.625 348.6</b> (WEST)
	<b>126.1 338.25</b> (331°-090°)	<b>134.425 348.6</b> (Rwys 1L/19R and 12/30)	



800 3000 AMOSS VGS1 and RNAV glidepath not coincident (VGS1 Angle 3.00/TCH 70).

	MULKY	RNDON	REKKN	ROWYN	RAYZE	RIECE	RAGGY	RUBNZ
	1500	2000	3000	4000	5000	6000	7000	8000
	3.7 NM	1.6 NM	3.2 NM	3.3 NM	3.1 NM	3.5 NM	3.1 NM	3.7 NM
CATEGORY	A		B		C		D	
RNP 0.10 DA	608/26		330 (300-½)					
RNP 0.30 DA	658/35		380 (400-¾)					

**AUTHORIZATION REQUIRED**



NE-3, 11 JUN 2026 to 09 JUL 2026

NE-3, 11 JUN 2026 to 09 JUL 2026