

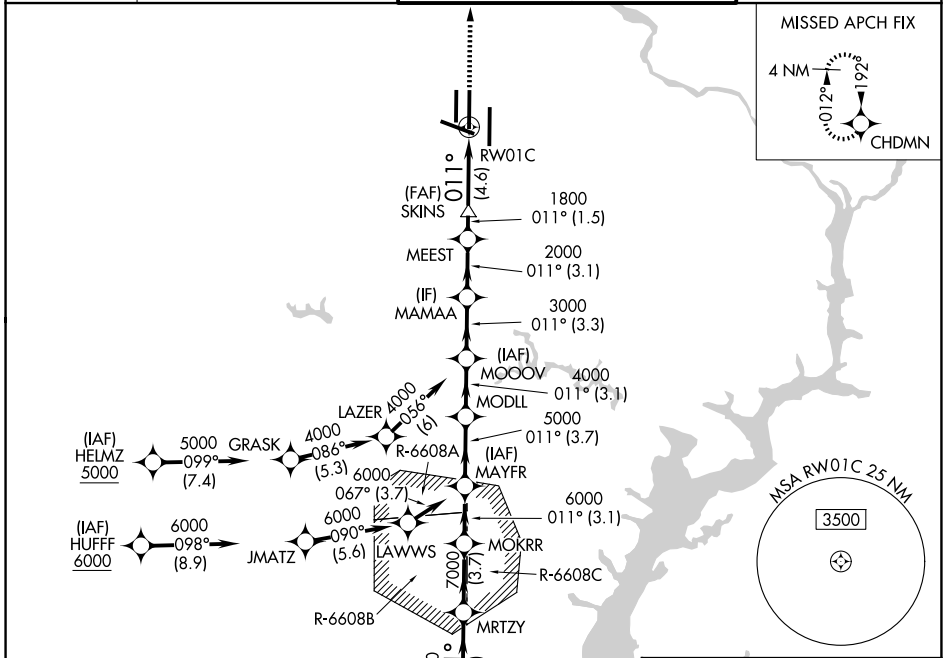
APP CRS	Rwy Ldg	11500
011°	TDZE	286
	Apt Elev	312

RNAV (RNP) Z RWY 1C

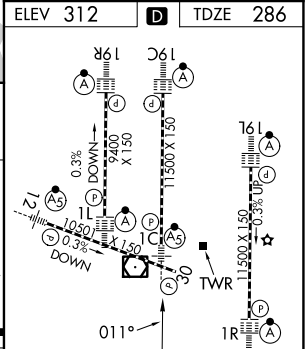
WASHINGTON DULLES INTL (IAD)

RNP AR APCH - GPS. Authorization required.		MALSR	MISSED APPROACH: Climb to 4000 direct CHDMN and hold, continue climb-in-hold to 4000.
Simultaneous approach authorized. For uncompensated Baro-VNAV systems, procedure NA below -13°C or above 54°C. For inop ALS, increase RNP 0.11 all Cats visibility to RVR 4000.			

D-ATIS	POTOMAC APP CON	DULLES TOWER	GND CON
134.85	120.45 306.925 (241°-330°)	120.1 317.8 (Rwy 1R/19L)	121.9 317.8 (EAST)
	128.525 306.925 (091°-240°)	120.25 348.6 (Rwy 1C/19C)	121.625 348.6 (WEST)
	126.1 338.25 (331°-090°)	134.425 348.6 (Rwys 1L/19R and 12/30)	



ELEV 312	TDZE 286
VGSI and RNAV glidepath not coincident (VGSI Angle 3.00/TCH 70).	
GP 3.00°	TCH 54
CATEGORY A B C D	
RNP 0.11 DA	540/24 254 (300-½)
RNP 0.30 DA	730/45 444 (500-¾)



AUTHORIZATION REQUIRED		TDZL/RCLS Rwys 1C, 1L, 1R, 12, 19C and 19R REIL Rwy 30 HIRL all rwys
-------------------------------	--	--

NE-3, 11 JUN 2026 to 09 JUL 2026

NE-3, 11 JUN 2026 to 09 JUL 2026