

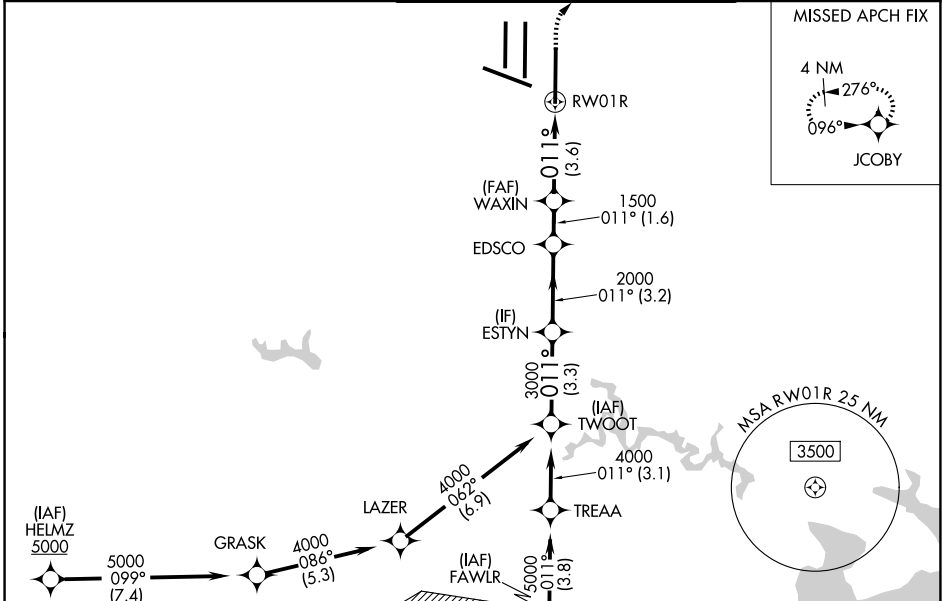
APP CRS	Rwy Ldg	11500
011°	TDZE	312
	Apt Elev	312

RNAV (RNP) Z RWY 1R

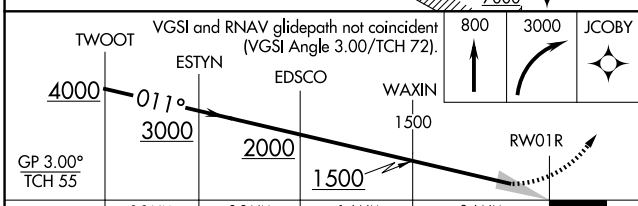
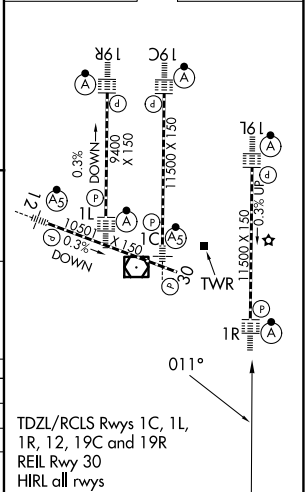
WASHINGTON DULLES INTL (IAD)

RNP AR APCH - GPS.	ALSF-2	MISSED APPROACH: Climb to 800 then climbing right turn to 3000 direct JCOBY and hold.
<p>▼ For uncompensated Baro-VNAV systems, procedure NA below -13°C or above 54°C. Simultaneous approach authorized. For inop ALS, increase RNP 0.11 all Cats visibility to RVR 4500.</p>		

D-ATIS	POTOMAC APP CON	DULLES TOWER	GND CON
134.85	120.45 306.925 (241°-330°)	120.1 317.8 (Rwys 1R/19L)	121.9 317.8 (EAST)
	128.525 306.925 (091°-240°)	120.25 348.6 (Rwys 1C/19C)	121.625 348.6 (WEST)
	126.1 338.25 (331°-090°)	134.425 348.6 (Rwys 1L/19R and 12/30)	



ELEV 312	D	TDZE 312
----------	----------	----------



CATEGORY	A	B	C	D
RNP 0.11 DA		625/24	313 (400-½)	
RNP 0.30 DA		770/45	458 (500-¾)	

AUTHORIZATION REQUIRED

TDZL/RCLS Rwys 1C, 1L, 1R, 12, 19C and 19R
REIL Rwy 30
HIRL all rwys

NE-3, 11 JUN 2026 to 09 JUL 2026

NE-3, 11 JUN 2026 to 09 JUL 2026