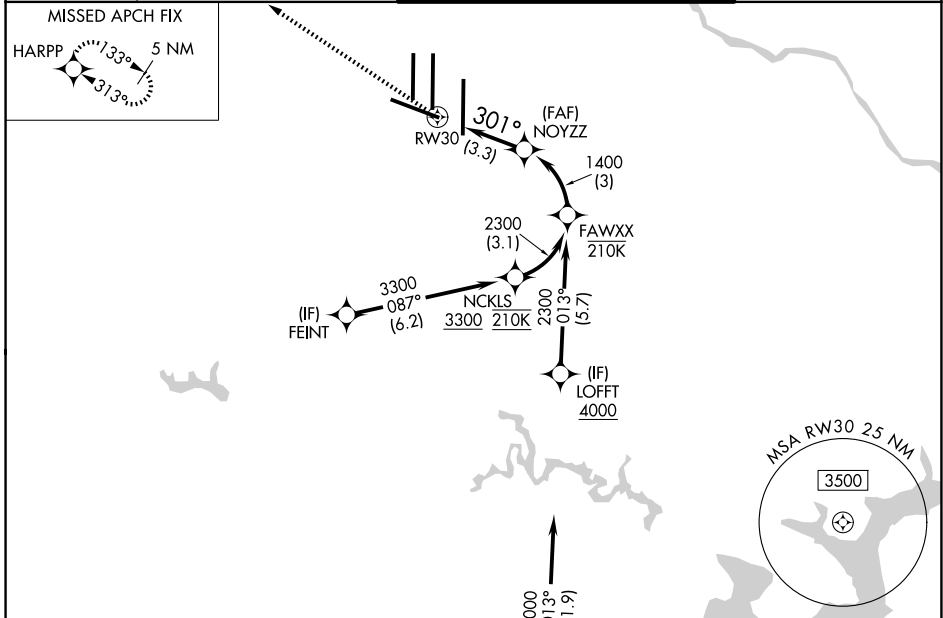


APP CRS 301°	Rwy Ldg 10501
	TDZE 288
	Apt Elev 312

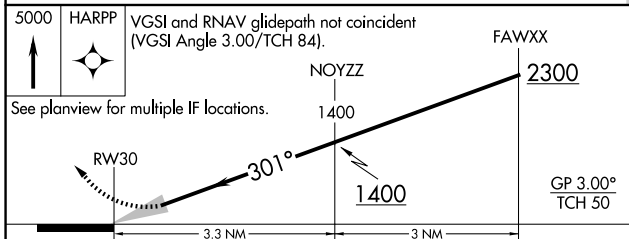
RNAV (RNP) Z RWY 30

WASHINGTON DULLES INTL (IAD)

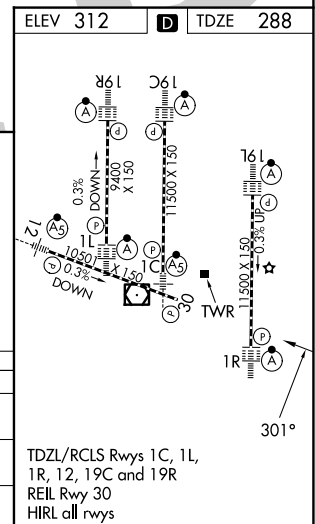
RNP AR APCH - GPS.		MISSED APPROACH: Climb to 5000 direct HARPP and hold.	
▼ For uncompensated Baro-VNAV systems, procedure NA below -13°C or above 54°C.			
D-ATIS 134.85	POTOMAC APP CON 120.45 306.925 (241°-330°) 128.525 306.925 (091°-240°) 126.1 338.25 (331°-090°)	DULLES TOWER 120.1 317.8 (Rwys 1R/19L) 120.25 348.6 (Rwy 1C/19C) 134.425 348.6 (Rwys 1L/19R and 12/30)	GND CON 121.9 317.8 (EAST) 121.625 348.6 (WEST)



5000	HARPP	VGSI and RNAV glidepath not coincident (VGSI Angle 3.00/TCH 84).	FAWXX
			2300
			1400
			NOYZZ
			301°
			1400
			GP 3.00°
			TCH 50



CATEGORY	A	B	C	D
RNP 0.11 DA		750-1 ³ / ₈	462 (500-1 ³ / ₈)	
RNP 0.30 DA		808-1 ³ / ₈	520 (500-1 ³ / ₈)	



AUTHORIZATION REQUIRED

NE-3, 11 JUN 2026 to 09 JUL 2026

NE-3, 11 JUN 2026 to 09 JUL 2026