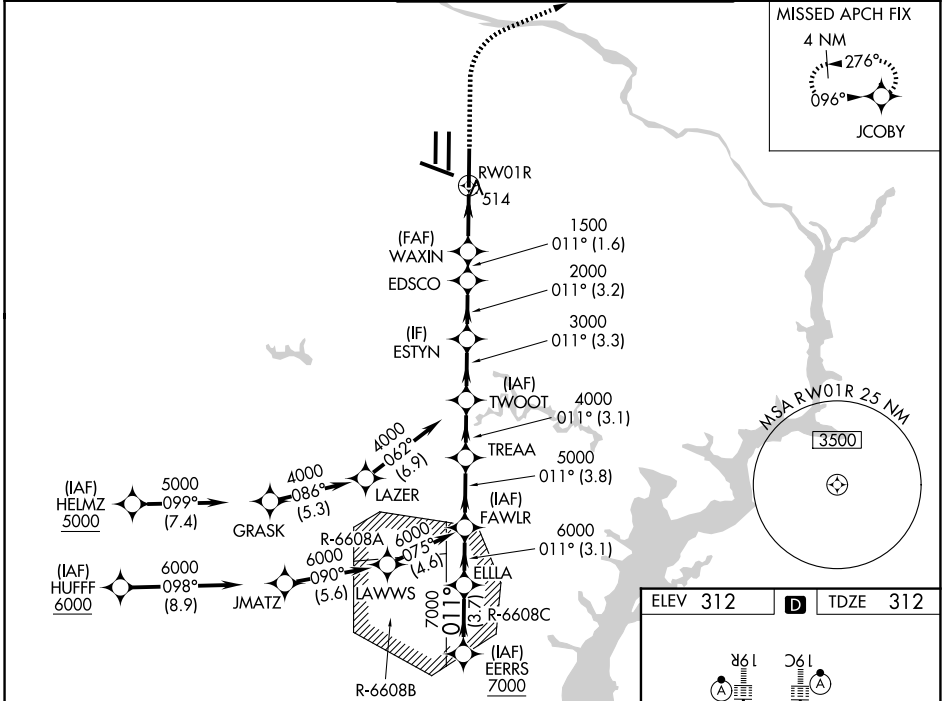


WAAS CH 56409 W01A	APP CRS 011°	Rwy Ldg 11500 TDZE 312 Apt Elev 312
---------------------------------	------------------------	--

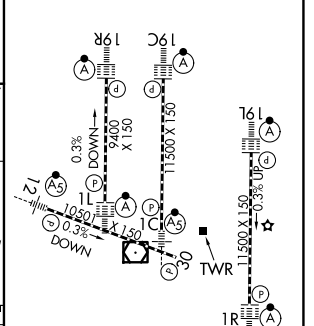
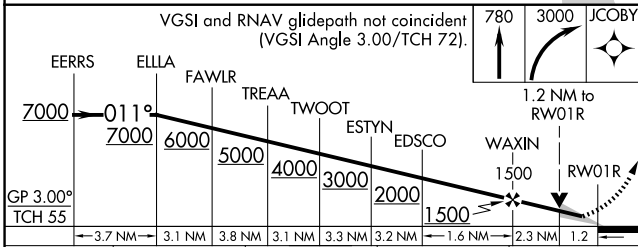
RNAV (GPS) Y RWY 1R

WASHINGTON DULLES INTL (IAD)

RNP APCH - GPS.		ALSF-2	MISSED APPROACH: Climb to 780, then climbing right turn to 3000 direct JCOBY and hold.
▼ ▲	For uncompensated Baro-VNAV systems, LNAV/VNAV NA below -13°C or above 54°C. Simultaneous approach authorized. LNAV procedure NA during simultaneous operations. Use of FD or AP required during simultaneous operations. For inop ALS, increase LNAV/VNAV all Cats visibility to RVR 6000 and LNAV Cat C/D visibility to 1/2 SM.		
D-ATIS 134.85	POTOMAC APP CON 120.45 306.925 (241°-330°) 128.525 306.925 (091°-240°) 126.1 338.25 (331°-090°)	DULLES TOWER 120.1 317.8 (Rwys 1R/19L) 120.25 348.6 (Rwy 1C/19C) 134.425 348.6 (Rwys 1L/19R and 12/30)	GND CON 121.9 317.8 (EAST) 121.625 348.6 (WEST)



ELEV 312	TDZE 312
----------	----------



CATEGORY	A		B		C		D
LPV DA	512/18		200 (200-1/2)				
LNAV/VNAV DA	728/40		416 (500-3/4)				
LNAV MDA	780/24 468 (500-1/2)		780/50 468 (500-1)				
CIRCLING	940-1 628 (700-1)		940-1 3/4 628 (700-1 3/4)		1180-2 3/4 868 (900-2 3/4)		

TDZL/RCLS Rwys 1C, 1L, 1R, 12, 19C and 19R
REIL Rwy 30
HIRL all rwys

NE-3, 11 JUN 2026 to 09 JUL 2026

NE-3, 11 JUN 2026 to 09 JUL 2026