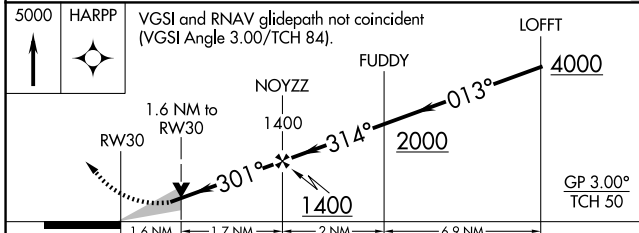
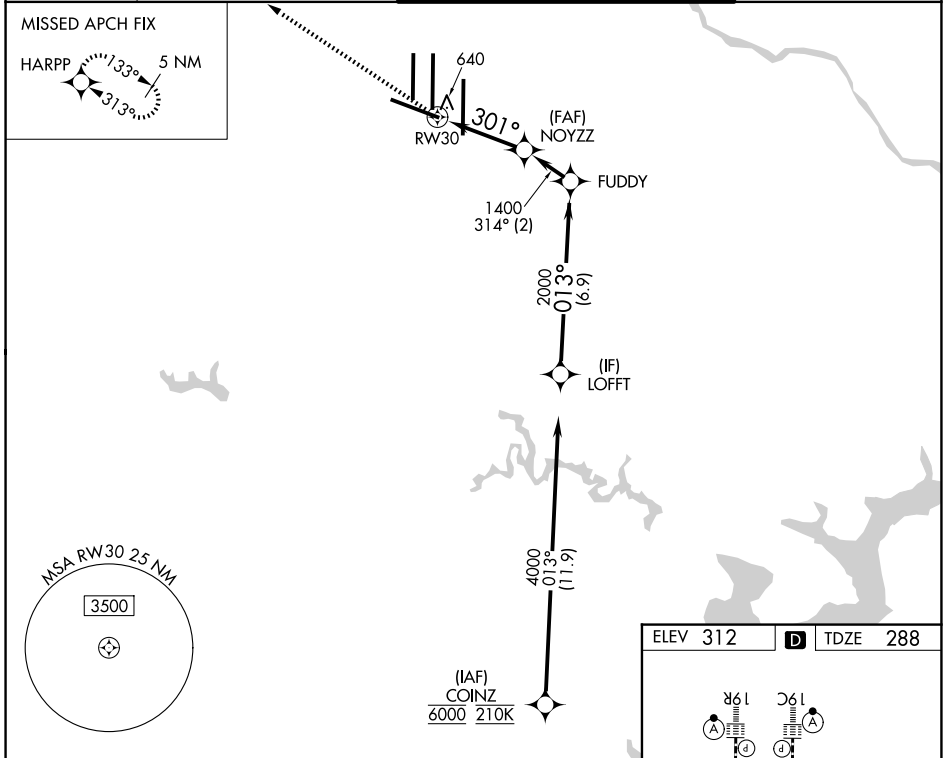


APP CRS	Rwy Ldg	10501
301°	TDZE	288
	Apt Elev	312

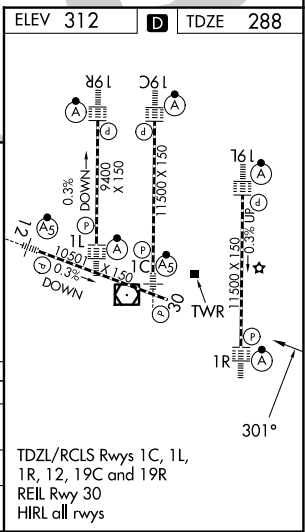
RNAV (GPS) Y RWY 30

WASHINGTON DULLES INTL (IAD)

RNP APCH - GPS.		MISSED APPROACH: Climb to 5000 direct HARPP and hold.	
⚠ For uncompensated Baro-VNAV systems, LNAV/VNAV NA below -1.3°C or above 54°C.			
D-ATIS	POTOMAC APP CON	DULLES TOWER	GND CON
134.85	120.45 306.925 (241°-330°)	120.1 317.8 (Rwy 1R/19L)	121.9 317.8 (EAST)
	126.1 338.25 (331°-090°)	120.25 348.6 (Rwy 1C/19C)	121.625 348.6 (WEST)
		134.425 348.6 (Rwys 1L/19R and 12/30)	



CATEGORY	A	B	C	D
LNAV/VNAV DA		801-1 ³ / ₈	513 (500-1 ³ / ₈)	
LNAV MDA	900/55	612 (600-1)	900-1 ³ / ₄	612 (600-1 ³ / ₄)
CIRCLING	940-1	628 (700-1)	940-1 ³ / ₄ 628 (700-1 ³ / ₄)	1180-2 ³ / ₄ 868 (900-2 ³ / ₄)



NE-3, 11 JUN 2026 to 09 JUL 2026

NE-3, 11 JUN 2026 to 09 JUL 2026

TDZL/RCLS Rwys 1C, 1L, 1R, 12, 19C and 19R
REIL Rwy 30
HIRL all rwys