

(ADELL8.ADELL) 26078

ADELL EIGHT DEPARTURE (RNAV)

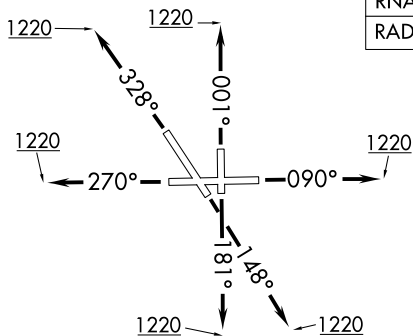
AL-5103 (FAA)

AURORA MUNI (ARR)
CHICAGO/AURORA, ILLINOIS

RNAV 1 - DME/DME/IRU or GPS.
RADAR required.

CHICAGO DEP CON
133.5 349.0
ATIS
125.85
GND CON
121.7
AURORA TOWER ★
120.6 (CTAF)

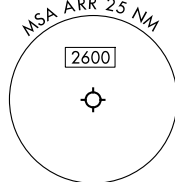
**TOP ALTITUDE:
ASSIGNED BY ATC**



TAKEOFF MINIMUMS:
Rwys 9, 15, 18, 27, 33, 36: Standard.

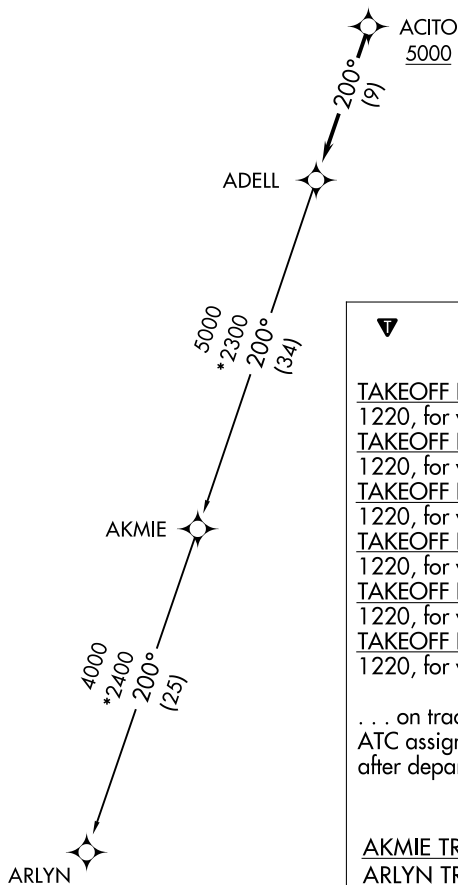
NOTE: Turbojet departures maintain 250K until advised by ATC.

NOTE: AKMIE Transition: For aircraft inbound to BMI, SPI, PIA, or as assigned by ATC.



EC-3, 11 JUN 2026 to 09 JUL 2026

EC-3, 11 JUN 2026 to 09 JUL 2026



NOTE: Chart not to scale.

DEPARTURE ROUTE DESCRIPTION

- TAKEOFF RUNWAY 9: Climb on heading 090° to 1220, for vectors to ACITO, thence. . . .
- TAKEOFF RUNWAY 15: Climb on heading 148° to 1220, for vectors to ACITO, thence. . . .
- TAKEOFF RUNWAY 18: Climb on heading 181° to 1220, for vectors to ACITO, thence. . . .
- TAKEOFF RUNWAY 27: Climb on heading 270° to 1220, for vectors to ACITO, thence. . . .
- TAKEOFF RUNWAY 33: Climb on heading 328° to 1220, for vectors to ACITO, thence. . . .
- TAKEOFF RUNWAY 36: Climb on heading 001° to 1220, for vectors to ACITO, thence. . . .

. . . on track 200° to ADELL, then on transition, maintain ATC assigned altitude. Expect filed altitude 10 minutes after departure.

AKMIE TRANSITION (ADELL8.AKMIE):
ARLYN TRANSITION (ADELL8.ARLYN):

ADELL EIGHT DEPARTURE (RNAV)
(ADELL8.ADELL) 19MAR26

CHICAGO/AURORA, ILLINOIS
AURORA MUNI (ARR)