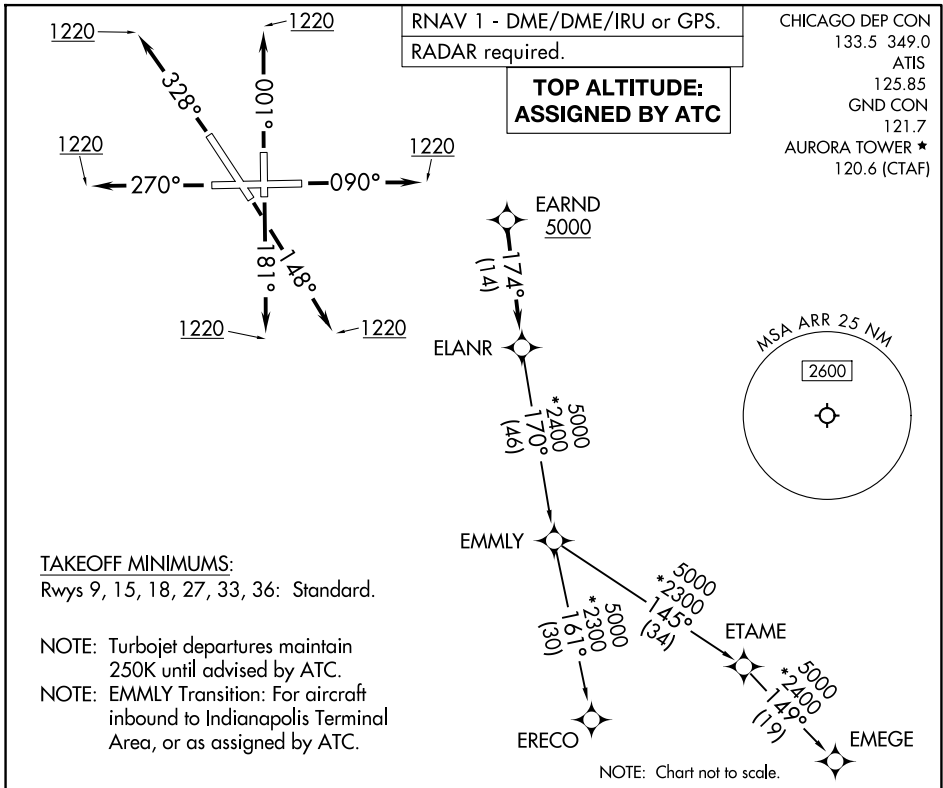


(ELANR9.ELANR) 26078

AL-5103 (FAA)

AURORA MUNI (ARR)  
CHICAGO/AURORA, ILLINOIS

# ELANR NINE DEPARTURE (RNAV)



EC-3, 11 JUN 2026 to 09 JUL 2026

EC-3, 11 JUN 2026 to 09 JUL 2026

## DEPARTURE ROUTE DESCRIPTION

- TAKEOFF RUNWAY 9:** Climb on heading 090° to 1220, for vectors to EARND, thence. . . .
- TAKEOFF RUNWAY 15:** Climb on heading 148° to 1220, for vectors to EARND, thence. . . .
- TAKEOFF RUNWAY 18:** Climb on heading 181° to 1220, for vectors to EARND, thence. . . .
- TAKEOFF RUNWAY 27:** Climb on heading 270° to 1220, for vectors to EARND, thence. . . .
- TAKEOFF RUNWAY 33:** Climb on heading 328° to 1220, for vectors to EARND, thence. . . .
- TAKEOFF RUNWAY 36:** Climb on heading 001° to 1220, for vectors to EARND, thence. . . .

. . . . on track 174° to ELANR, then on transition, maintain ATC assigned altitude. Expect filed altitude 10 minutes after departure.

- EMEGE TRANSITION (ELANR9.EMEGE):
- EMLLY TRANSITION (ELANR9.EMLLY):
- ERECO TRANSITION (ELANR9.ERECO):

# ELANR NINE DEPARTURE (RNAV)

(ELANR9.ELANR) 19MAR26

CHICAGO/AURORA, ILLINOIS  
AURORA MUNI (ARR)