

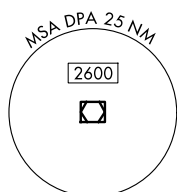
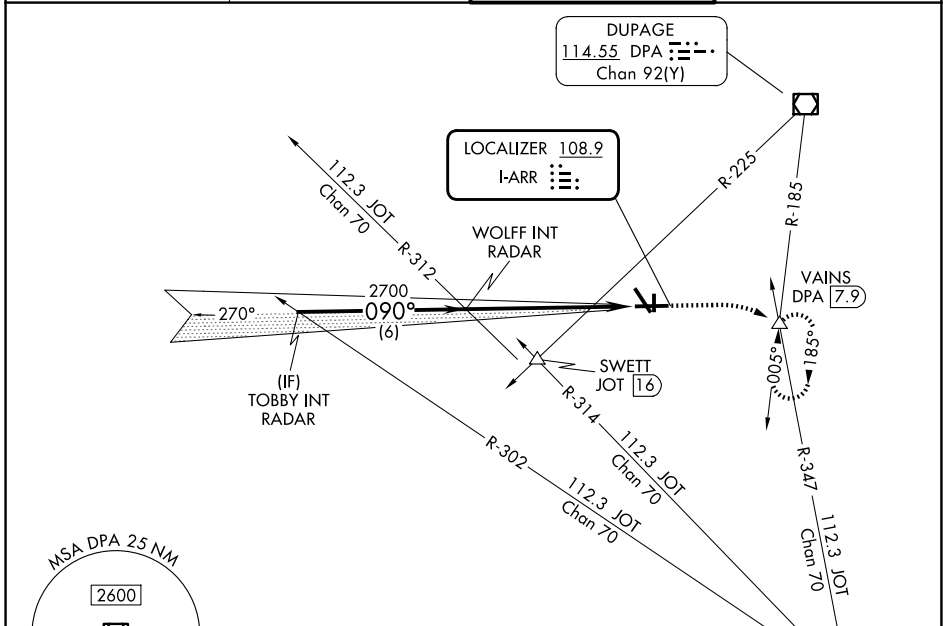
LOC I-ARR 108.9	APP CRS 090°	Rwy Ldg TDZE Apt Elev	6501 707 712
---------------------------	------------------------	-----------------------------	---

ILS or LOC RWY 9

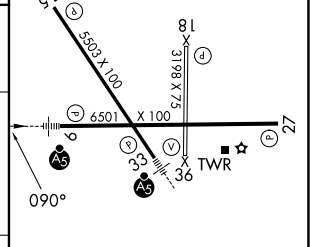
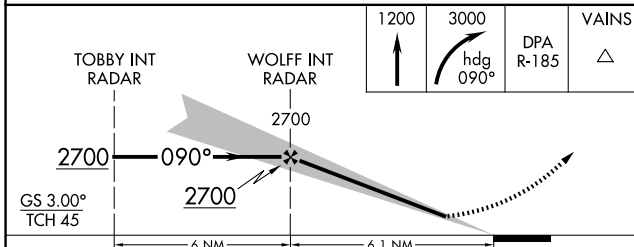
AURORA MUNI (A.R.R.)

RADAR required for procedure entry.		MALSRL	MISSED APPROACH: Climb to 1200 then climbing right turn to 3000 on heading 090° and on DPA VOR/DME R-185 to VAINS INT/DPA 7.9 DME and hold, continue climb-in-hold to 3000.
▼ For inop ALS, increase S-LOC 9 Cat C/D visibilities to 1½ SM.			

ATIS 125.85	CHICAGO APP CON 133.5 349.0	AURORA TOWER ★ 120.6 (CTAF)	GND CON 121.7
-----------------------	---------------------------------------	---------------------------------------	-------------------------



ELEV 712	D	TDZE 707
----------	----------	----------



CATEGORY	A	B	C	D
S-ILS 9	907-½ 200 (200-½)			
S-LOC 9	1220-½ 513 (600-½)		1220-1 513 (600-1)	
CIRCLING	1220-1 508 (600-1)		1300-1½ 588 (600-1½)	1320-2 608 (700-2)

MIRL Rwy 18-36	L
HIRL Rwy 15-33 and 9-27	L
REIL Rwy 15, 18, 27, and 36	L
FAF to MAP 6.1 NM	
Knots	60 90 120 150 180
Min:Sec	6:06 4:04 3:03 2:26 2:02