
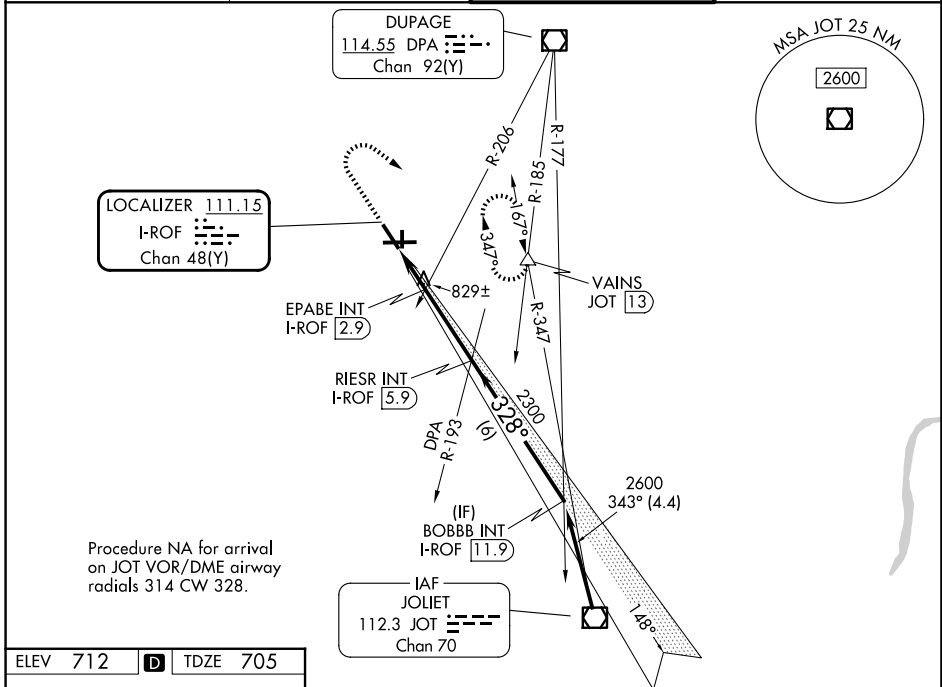


LOC/DME I-ROF 111.15 Chan 48(Y)	APP CRS 328°	Rwy Ldg TDZE Apt Elev	5503 705 712
--	------------------------	-----------------------------	---

LOC RWY 33

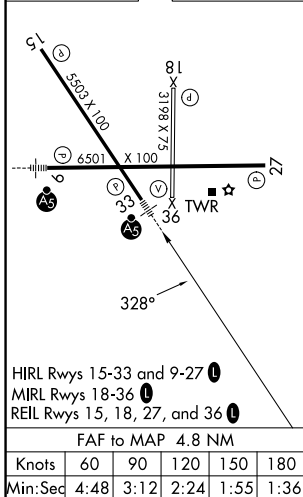
AURORA MUNI (A.R.R.)

<p>▽ For inop ALS, increase S-LOC 33 Cats C and D visibility to 1¼ SM and EPABE FIX minimums S-LOC 33 Cats C and D visibility to 1 SM.</p>	<p>MALSR </p>	<p>MISSED APPROACH: Climb to 1400 then climbing right turn to 3000 on heading 146° and JOT VOR/DME R-347 to VAINS INT/JOT 13 DME and hold, continue climb-in-hold to 3000.</p>	
		<p>ATIS 125.85</p>	<p>CHICAGO APP CON 133.5 349.0</p>



Procedure NA for arrival on JOT VOR/DME airway radials 314 CW 328.

ELEV 712	D	TDZE 705
----------	----------	----------



<p>1400</p> <p>3000</p> <p>hdg 146°</p>	<p>JOT R-347</p>	<p>VAINS</p>	<p>RIESR INT I-ROF 5.9</p>	<p>BOBBB INT I-ROF 11.9</p>	<p>2600</p>
<p>EPABE INT I-ROF 2.9</p> <p>I-ROF 1.1</p> <p>I-ROF 2.1</p> <p>328°</p> <p>2300</p> <p>3.04°</p> <p>TCH 48</p> <p>1320</p>					
<p>CATEGORY</p>	<p>A</p>	<p>B</p>	<p>C</p>	<p>D</p>	
<p>S-LOC 33</p>	<p>1320-½</p>	<p>615 (700-½)</p>	<p>1320-1¾</p>	<p>615 (700-1¾)</p>	
<p>CIRCLING</p>	<p>1320-1</p>	<p>608 (700-1)</p>	<p>1320-1¾</p>	<p>608 (700-1¾)</p>	<p>1320-2</p>
<p>EPABE FIX MINIMUMS (DUAL VOR RECEIVERS or DME REQUIRED)</p>					
<p>S-LOC 33</p>	<p>1080-½</p>	<p>375 (400-½)</p>	<p>1080-⅝</p>	<p>375 (400-⅝)</p>	
<p>CIRCLING</p>	<p>1200-1</p>	<p>488 (500-1)</p>	<p>1300-1½</p>	<p>588 (600-1½)</p>	<p>1320-2</p>

EC-3, 11 JUN 2026 to 09 JUL 2026

EC-3, 11 JUN 2026 to 09 JUL 2026