

WAAS CH <b>72941</b> <b>W15A</b>	APP CRS <b>148°</b>	Rwy Ldg TDZE Apt Elev	<b>5503</b> <b>712</b> <b>712</b>
--	------------------------	-----------------------------	---

# RNAV (GPS) RWY 15

AURORA MUNI (A.R.R.)

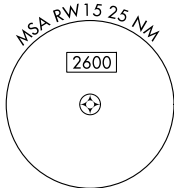
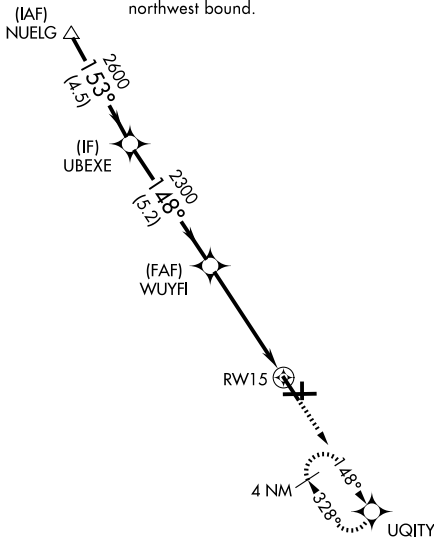
RNP APCH - GPS.

▼ For uncompensated Baro-VNAV systems, LNAV/VNAV NA below -20°C or above 54°C. Rwy 15 helicopter visibility reduction below ¼ SM NA.

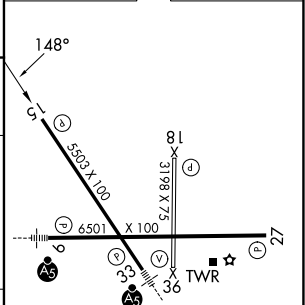
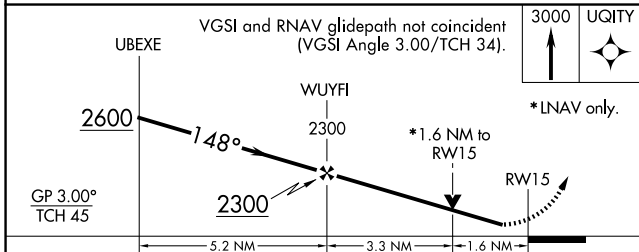
MISSED APPROACH: Climb to 3000 direct UQITY and hold, continue climb-in-hold to 3000.

ATIS <b>125.85</b>	CHICAGO APP CON <b>133.5 349.0</b>	AURORA TOWER* <b>120.6 (CTAF) 0</b>	GND CON <b>121.7</b>
-----------------------	---------------------------------------	--	-------------------------

Procedure NA for arrivals at NUELG on V172 and V177 northwest bound.



ELEV 712	<b>D</b> TDZE 712
----------	-------------------



CATEGORY	A	B	C	D
LPV DA		962-¾	250 (300-¾)	
LNAV/VNAV DA		962-¾	250 (300-¾)	
LNAV MDA	1260-1	548 (600-1)	1260-1½	548 (600-1½)
CIRCLING	1260-1	548 (600-1)	1300-1⅝ 588 (600-1½)	1320-2 608 (700-2)

HIRL Rwy 15-33 and 9-27 0

MIRL Rwy 18-36 0

REIL Rwy 15, 18, 27, and 36 0