

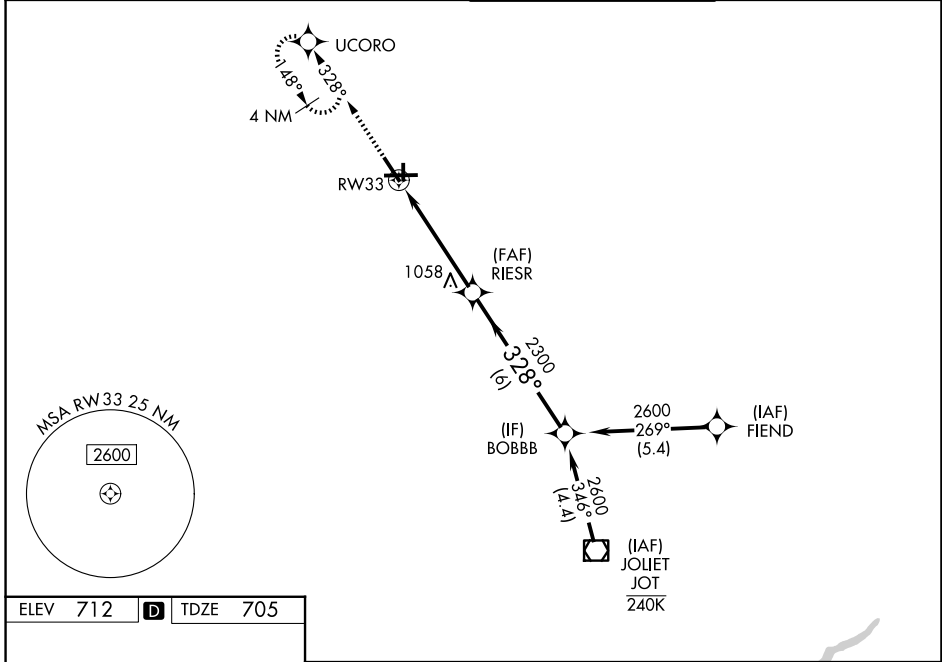
WAAS CH <b>49105</b> <b>W33A</b>	APP CRS <b>328°</b>	Rwy Ldg TDZE <b>705</b> Apt Elev <b>712</b>
--	------------------------	---

# RNAV (GPS) RWY 33

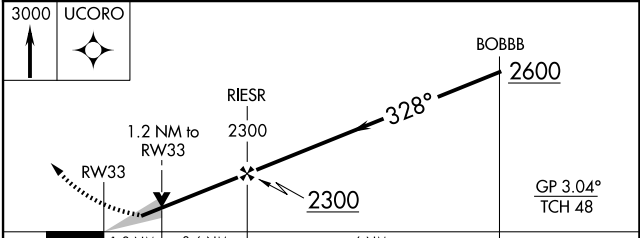
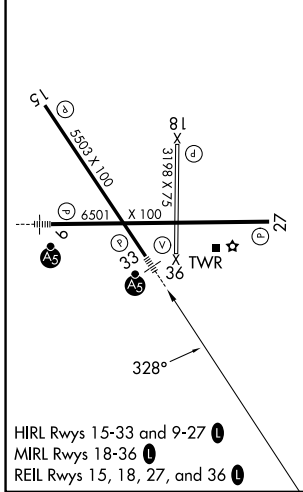
AURORA MUNI (A.R.R.)

RNP APCH - GPS. ▼ For uncompensated Baro-VNAV systems, LNAV/VNAV NA below -23°C or above 54°C. ▲ Circling Rwy 18 NA at night. For inop ALS, increase LPV all Cats visibility to 1 SM.	MALSRL 	MISSED APPROACH: Climb to 3000 direct UCORO and hold, continue climb-in-hold to 3000.
---	------------	--

ATIS <b>125.85</b>	CHICAGO APP CON <b>133.5 349.0</b>	AURORA TOWER ★ <b>120.6 (CTAF) 0</b>	GND CON <b>121.7</b>
-----------------------	---------------------------------------	---	-------------------------



ELEV 712	<b>D</b>	TDZE 705
----------	----------	----------



CATEGORY	A	B	C	D
LPV DA		1042-1/2	337 (400-1/2)	
LNAV/VNAV DA		1140-3/4	435 (500-3/4)	
LNAV MDA	1140-1/2	435 (500-1/2)	1140-3/4	435 (500-3/4)
CIRCLING	1200-1	488 (500-1)	1300-1 1/2 588 (600-1 1/2)	1340-2 628 (700-2)

EC-3, 11 JUN 2026 to 09 JUL 2026

EC-3, 11 JUN 2026 to 09 JUL 2026