

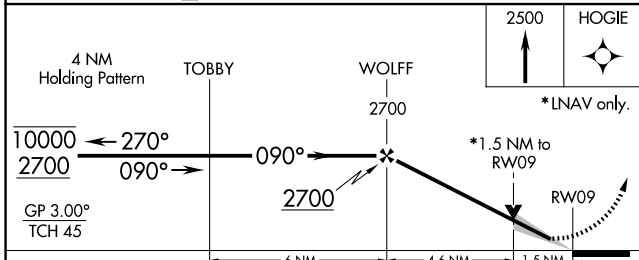
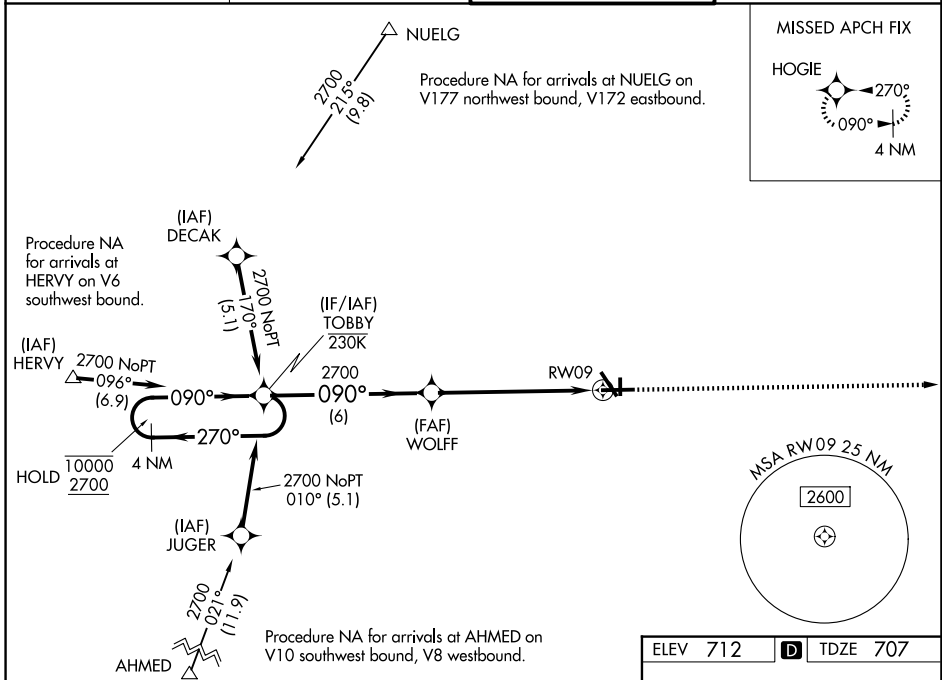
WAAS CH 45522 W09A	APP CRS 090°	Rwy Ldg TDZE Apt Elev	6501 707 712
--	------------------------	-----------------------------	---

RNAV (GPS) RWY 9

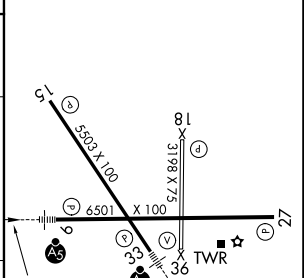
AURORA MUNI (A.R.R.)

RNP APCH - GPS.		MALSR	MISSED APPROACH: Climb to 2500 direct HOGIE and hold.
<p>▼ For uncompensated Baro-VNAV systems, LNAV/VNAV NA below -20°C or above 54°C. For inop ALS, increase LNAV Cat C/D visibility to 1½ SM.</p>			

ATIS 125.85	CHICAGO APP CON 133.5 349.0	AURORA TOWER ★ 120.6 (CTAF) 0	GND CON 121.7
-----------------------	---------------------------------------	---	-------------------------



ELEV 712	D	TDZE 707
----------	---	----------



CATEGORY	A	B	C	D
LPV DA	957-½		250 (300-½)	
LNAV/VNAV DA	1035-½		328 (400-½)	
LNAV MDA	1220-½ 513 (600-½)		1220-1 513 (600-1)	
CIRCLING	1220-1 508 (600-1)		1300-1½ 588 (600-1½) 1320-2 608 (700-2)	

MIRL Rwy 18-36 0

HIRL Rwy 15-33 and 9-27 0

REIL Rwy 15, 18, 27, and 36 0

EC-3, 11 JUN 2026 to 09 JUL 2026

EC-3, 11 JUN 2026 to 09 JUL 2026