


WAAS CH <b>45502</b> <b>W15A</b>	APP CRS <b>154°</b>	Rwy Ldg <b>10702</b> TDZE <b>16</b> Apt Elev <b>17</b>
--	------------------------	--

# RNAV (GPS) RWY 15

CHENNAULT INTL (CWF)

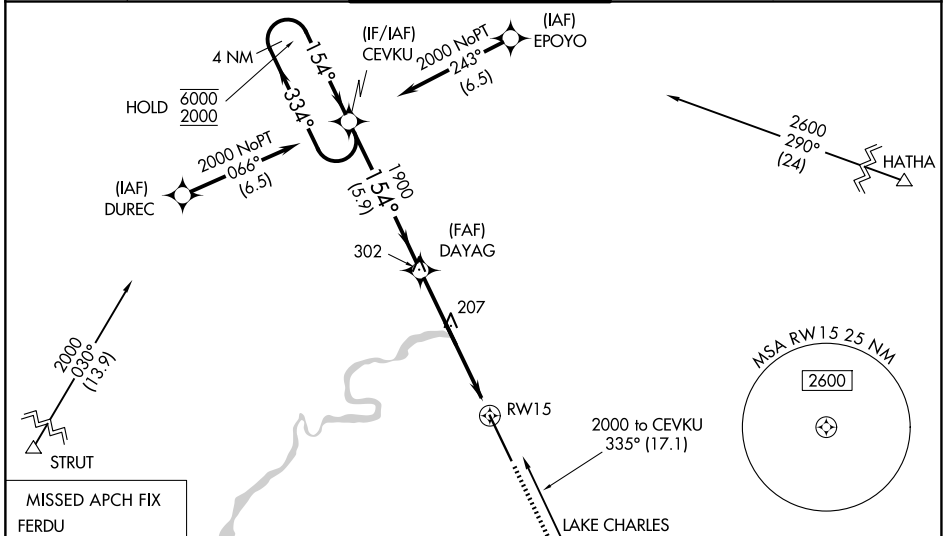
RNP APCH - GPS

**⚠** Baro-VNAV and VDP NA when using Lake Charles Rgnl altimeter setting. For uncompensated Baro-VNAV systems, procedure NA below -1.5°C or above 54°C. When local altimeter setting not received, use Lake Charles Rgnl altimeter ASR setting and increase LPV DA to 232 feet; increase LNAV/VNAV DA to 523 feet; increase all MDAs 20 feet and LNAV visibility Cat C/D 1/8 SM, and Circling visibility Cat D 1/4 SM. For inop ALS, increase LNAV/VNAV all Cats visibility to 1 1/8 SM. For inop ALS when using Lake Charles Rgnl altimeter setting increase LNAV/VNAV visibility all Cats to 1 1/8 SM.

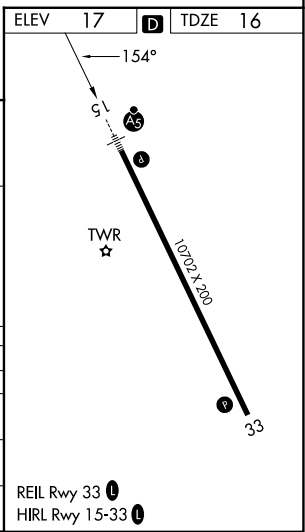
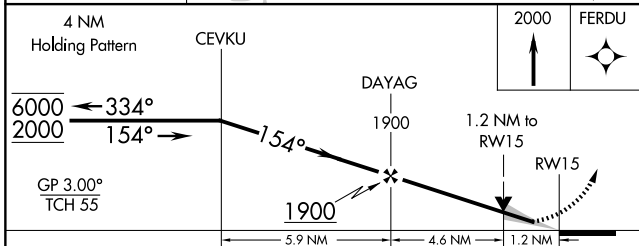
MALSR 

MISSED APPROACH: Climb to 2000 direct FERDU and hold.

ATIS <b>120.0</b>	LAKE CHARLES APP CON* <b>119.8 282.3</b>	CHENNAULT TOWER* <b>124.2 (CTAF) 0 290.4</b>	GND CON <b>121.65 275.8</b>	UNICOM <b>122.95</b>
----------------------	---	---	--------------------------------	-------------------------



ELEV 17	<b>D</b>	TDZE 16
---------	----------	---------



CATEGORY	A	B	C	D
LPV DA		216-1/2	200 (200-1/2)	
LNAV/VNAV DA		507-1	491 (500-1)	
LNAV MDA	460-1/2	444 (500-1/2)	460-3/4	444 (500-3/4)
CIRCLING	640-1	623 (700-1)	640-1 3/4	740-2 1/4
			623 (700-1 3/4)	723 (800-2 1/4)

SC-4, 11 JUN 2026 to 09 JUL 2026

SC-4, 11 JUN 2026 to 09 JUL 2026