

WAAS CH 65817 W33A	APP CRS 334°	Rwy Ldg 10702 TDZE 17 Apt Elev 17
--	------------------------	--

RNAV (GPS) RWY 33

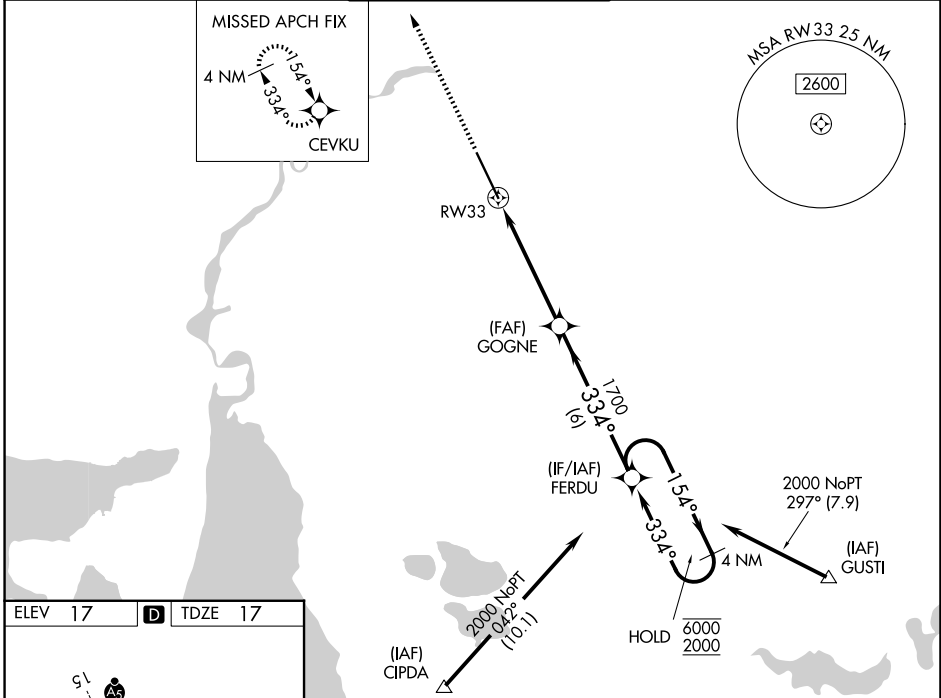
CHENNAULT INTL (CWF')

RNP APCH - GPS.

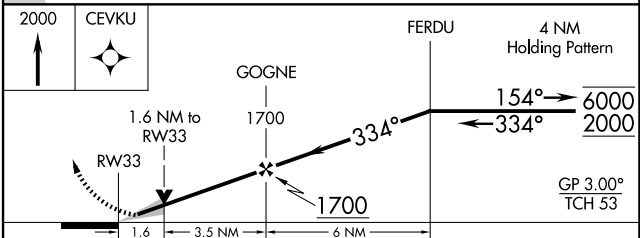
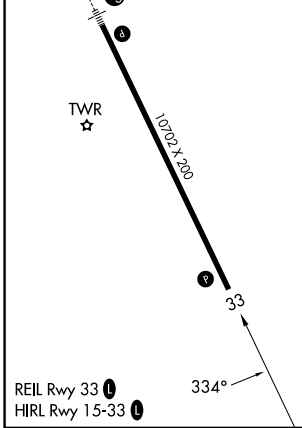
Baro-VNAV and VDP NA when using Lake Charles Rgnl altimeter setting.
 For uncompensated Baro-VNAV systems, LNAV/VNAV NA below -15°C or above 54°C.
 When local altimeter setting not received, use Lake Charles Rgnl altimeter setting and increase LPV DA to 233 feet; increase LNAV/VNAV DA to 510 feet and all visibilities 1/8 SM. Increase all MDAs 20 feet and LNAV visibility Cat C/D 1/8 SM.

MISSED APPROACH: Climb to 2000 direct CEVKU and hold.

ATIS 120.0	LAKE CHARLES APP CON * 119.8 282.3	CHENNAULT TOWER * 124.2 (CTAF) 0 290.4	GND CON 121.65 275.8	UNICOM 122.95
----------------------	--	--	--------------------------------	-------------------------



ELEV 17	D	TDZE 17
---------	----------	---------



CATEGORY	A	B	C	D
LPV DA		217-3/4	200 (200-3/4)	
LNAV/VNAV DA		494-13/4	477 (500-13/4)	
LNAV MDA	580-1	563 (600-1)	580-15/8	563 (600-15/8)
CIRCLING	640-1	623 (700-1)	640-13/4 623 (700-13/4)	740-21/4 723 (800-21/4)

SC-4, 11 JUN 2026 to 09 JUL 2026

SC-4, 11 JUN 2026 to 09 JUL 2026