

APP CRS 345°	Rwy Ldg TDZE Apt Elev	3999 667 697
------------------------	-----------------------------	---

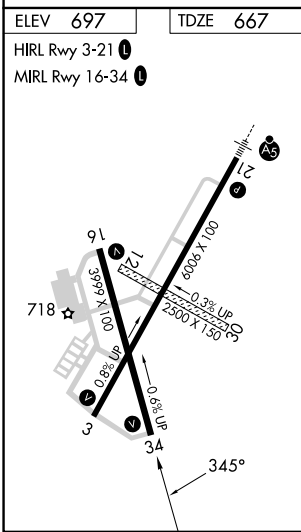
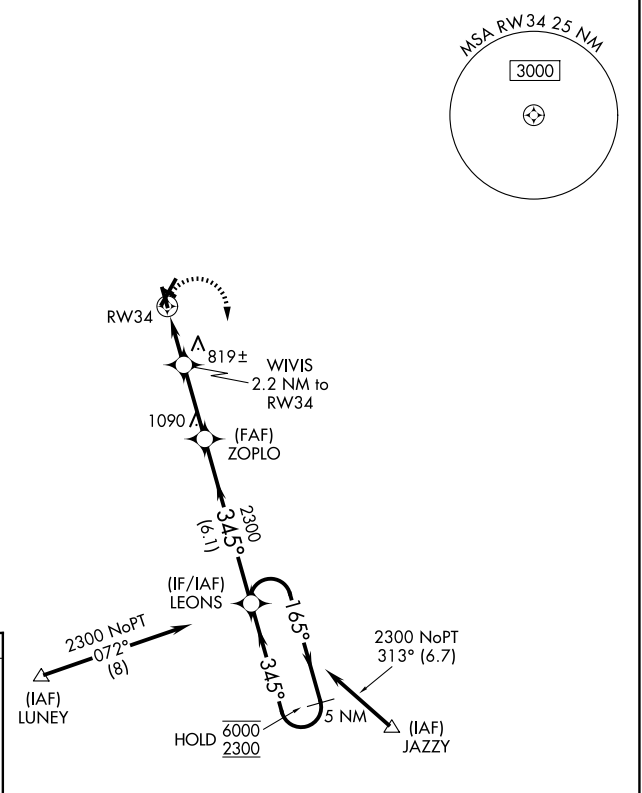
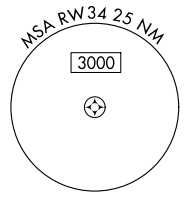
RNAV (GPS) RWY 34

VERMILION RGNL (DNTV)

RNP APCH - GPS.
 ▼ Circling NA to Rwy 12 and 30.
 ▲ Rwy 34 helicopter visibility reduction below ¾ SM NA.

MISSED APPROACH: Climbing right turn to 2300 direct LEONS and hold.

AWOS-3 119.275	CHAMPAIGN APP CON * 121.35 285.65	CLNC DEL 121.7	UNICOM 122.7 (CTAF)
--------------------------	---	--------------------------	-------------------------------



2300	LEONS	VGSI and descent angles not coincident (VGSI Angle 3.00/TCH 14).	
		ZOPLO	LEONS
		5 NM Holding Pattern	
		WIVIS 2.2 NM to RW34	3.05° TCH 40
		1400	2300
		2.2 NM	2.8 NM
		6.1 NM	
CATEGORY	A	B	C
LNAV MDA	1080-1	413 (400-1)	1080-1¼ 413 (400-1¼)
CIRCLING	1160-1	463 (500-1)	1240-1½ 543 (600-1½) 1340-2 643 (700-2)

EC-3, 11 JUN 2026 to 09 JUL 2026

EC-3, 11 JUN 2026 to 09 JUL 2026