

LOC I-JAN 110.5	APP CRS 159°	Rwy Ldg TDZE Apt Elev	8500 312 346
---------------------------	------------------------	-----------------------------	---

ILS RWY 16L (SA CAT I)

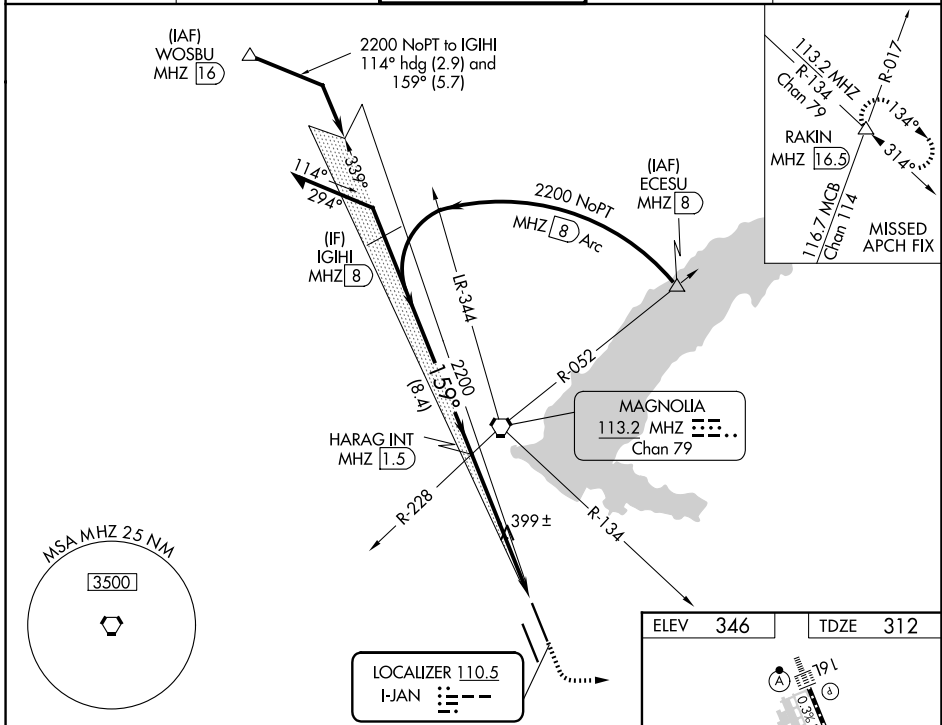
JACKSON-MEDGAR WILEY EVERS INTL (JAN)

⚠ When control tower closed, procedure NA.
⚠ When local altimeter setting not received, procedure NA.
 ASR Requires specific OPSPEC, MSPEC, or LOA approval and use of HUD to DA.

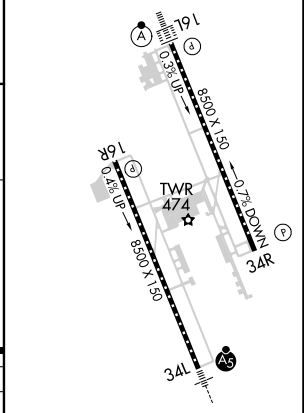
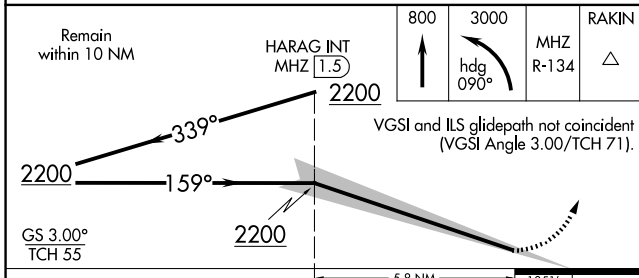
ALSF-2

MISSED APPROACH: Climb to 800 then climbing left turn to 3000 on heading 090° and on MHz VORTAC R-134 to RAKIN INT/16.5 DME and hold, continue climb-in-hold to 3000.

ATIS 121.05	JACKSON APP CON* 123.9 317.7	JACKSON TOWER* 120.9 (CTAF) 352.0	GND CON 121.7 348.6	UNICOM 122.95
-----------------------	--	---	-------------------------------	-------------------------



ELEV	346	TDZE	312
------	-----	------	-----



CATEGORY	A	B	C	D
S-ILS 16L		RA 169/14 150 DA 462		

SA CATEGORY I ILS - SPECIAL AIRCREW & AIRCRAFT CERTIFICATION REQUIRED

TDZL/RCLS Rwy 16L and 34L
 REIL Rwy 16R and 34R
 HIRL Rwy 16L-34R and 16R-34L

SC-4, 11 JUN 2026 to 09 JUL 2026

SC-4, 11 JUN 2026 to 09 JUL 2026