

ILS or LOC RWY 34L

JACKSON-MEDGAR WILEY EVERS INTL (JAN)

LOC I-FRL 109.3	APP CRS 339°	Rwy Ldg TDZE Apt Elev	8500 329 346
---------------------------	------------------------	-----------------------------	---

DME or RADAR required.

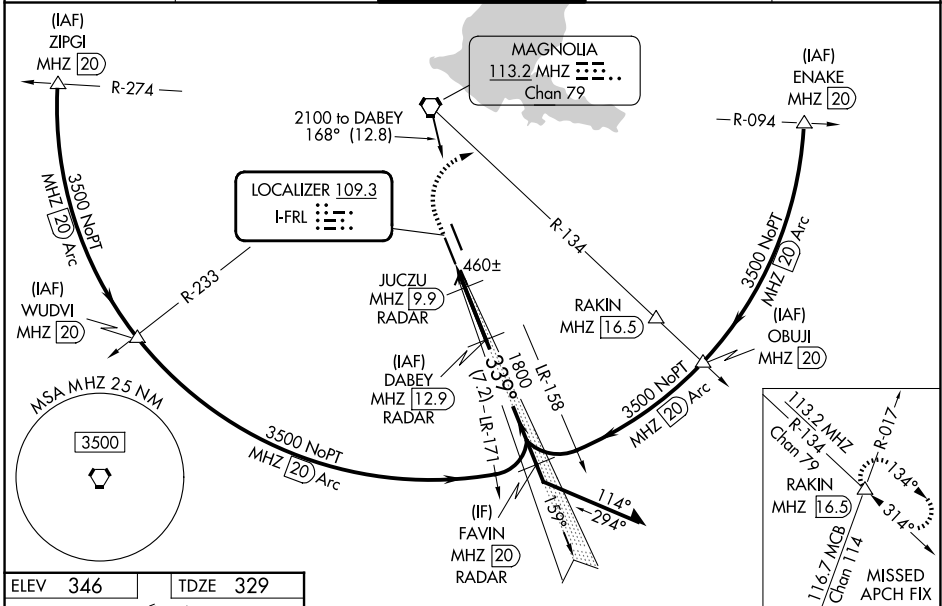
⚠ Circling NA for Cat E southwest of Rwy 16R-34L. Rwy 34L helicopter visibility reduction below RVR 4000 NA. When local altimeter setting not received, use HKS altimeter setting and increase all S-ILS 34L DA to 548 feet increase MDAs 20 feet. For inop ALS, increase S-ILS 34L ASR Cat E visibility to RVR 4000, increase S-LOC 34L Cat A/B visibility to RVR 5500 and Cat C/D/E to 1½ SM. Procedure turn NA for Cat E.
* 860 when using HKS altimeter setting.
DME from MHZ VORTAC.

MALSRL

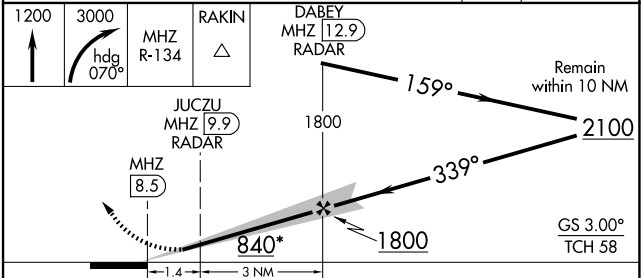
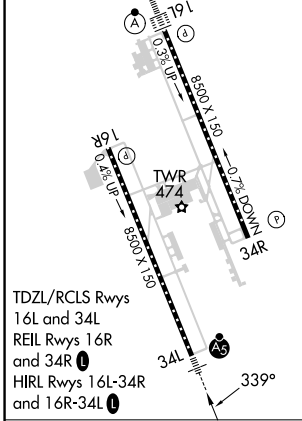


MISSED APPROACH:
Climb to 1200 then climbing right turn to 3000 on heading 070° and MHZ VORTAC R-134 to RAKIN INT/ MHZ 16.5 DME and hold, continue climb-in-hold to 3000.

ATIS 121.05	JACKSON APP CON* 123.9 317.7	JACKSON TOWER* 120.9 (CTAF) 0 352.0	GND CON 121.7 348.6	UNICOM 122.95
-----------------------	--	---	-------------------------------	-------------------------



ELEV 346	TDZE 329
----------	----------



CATEGORY	A	B	C	D	E
S-ILS 34L	529/18 200 (200-½)				
S-LOC 34L*	840/40	511 (500-¾)	840/55	511 (500-1)	
CIRCLING	880-1	900-1	900-1½	960-2	1040-2½
	534 (600-1)	554 (600-1)	554 (600-1½)	614 (700-2)	694 (700-2½)
JUCZU DME MINIMUMS #					
S-LOC 34L	760/40 431 (500-¾)				
CIRCLING	880-1	900-1	900-1½	960-2	1040-2½
	534 (600-1)	554 (600-1)	554 (600-1½)	614 (700-2)	694 (700-2½)

FAF to MAP 4.4 NM					
Knots	60	90	120	150	180
Min:Sec	4:24	2:56	2:12	1:46	1:28

ILS or LOC RWY 34L

SC-4, 11 JUN 2026 to 09 JUL 2026

SC-4, 11 JUN 2026 to 09 JUL 2026