

| | | |
|--|------------------------|---|
| WAAS CH 72911 W16A | APP CRS 159° | Rwy Ldg 8500 TDZE 312 Apt Elev 346 |
|--|------------------------|---|

RNAV (GPS) RWY 16L

JACKSON-MEDGAR WILEY EVERS INTL (JAN)

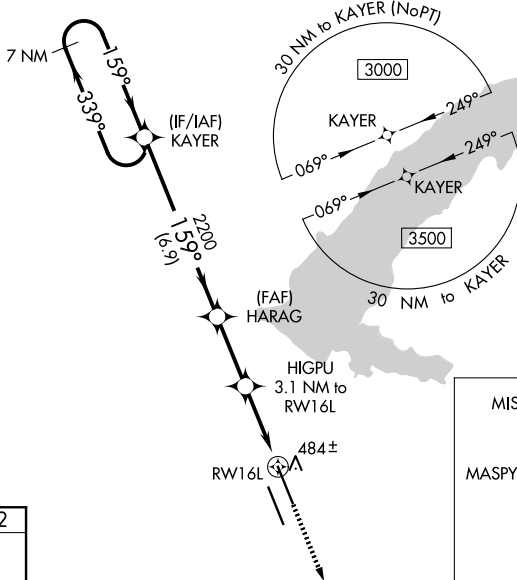
RNP APCH.

▼ For uncompensated Baro-VNAV systems, LNAV/VNAV NA below -7°C or above 54°C.
▲ Circling NA for Cat E southwest of Rwy 16R-34L. When local altimeter setting not received, use Hawkins Fld altimeter setting and increase all DA 19 feet and all MDA 20 feet, increase ASR LNAV/VNAV all Cats visibility to RVR 3400 and LNAV Cats C/D/E visibility to RVR 5000. VDP and Baro-VNAV NA when using Hawkins Fld altimeter setting. For inop ALS, increase LPV Cat E visibility to RVR 4000, LNAV/VNAV Cat E visibility to RVR 5500, and LNAV Cat E visibility to 1 3/8 SM. For inop ALS when using Hawkins Fld altimeter setting, increase LPV Cat E visibility to RVR 4000, LNAV/VNAV Cat E visibility to RVR 6000, and LNAV Cat E visibility to 1 3/8 SM.



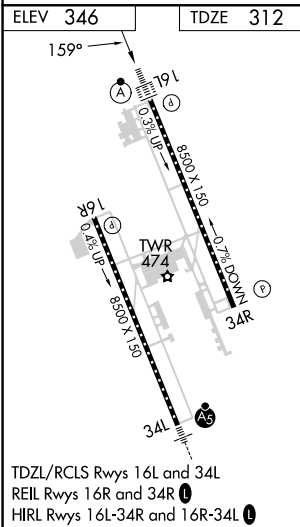
MISSED APPROACH:
Climb to 3000 direct MASPBY and hold.

| | | | | |
|-----------------------|---|--|-------------------------------|-------------------------|
| ATIS 121.05 | JACKSON APP CON * 123.9 317.7 | JACKSON TOWER * 120.9 (CTAF) 0 352.0 | GND CON 121.7 348.6 | UNICOM 122.95 |
|-----------------------|---|--|-------------------------------|-------------------------|



SC-4, 11 JUN 2026 to 09 JUL 2026

SC-4, 11 JUN 2026 to 09 JUL 2026



| | | | | | |
|----------------------|--|----------------------|------------------------------|----------------------|-------------------------------|
| 7 NM Holding Pattern | VGSI and RNAV glidepath not coincident (VGSI Angle 3.00/TCH 71). | 3000 | MASPY | | |
| GP 3.00° TCH 55 | 3000 ← 339° | 2200 | *LNAV only. | | |
| | 159° → | 2200 | | | |
| | | 159° | | | |
| | | *1340 | | | |
| | | *1.2 NM to RWY16L | | | |
| | | RWY16L | | | |
| | | 6.9 NM | | | |
| | | 2.7 NM | | | |
| | | 1.9 NM | | | |
| | | 1.2 NM | | | |
| CATEGORY | A | B | C | D | E |
| LPV DA | 512/18 200 (200-1/2) | | | | |
| LNAV/VNAV DA | 652/31 340 (400-5/8) | | | | |
| LNAV MDA | 760/24 | 448 (500-1/2) | 760/45 | 448 (500-7/8) | |
| CIRCLING | 880-1 534 (600-1) | 900-1 554 (600-1) | 900-1 1/2 554 (600-1 1/2) | 960-2 614 (700-2) | 1040-2 1/2 694 (700-2 1/2) |