

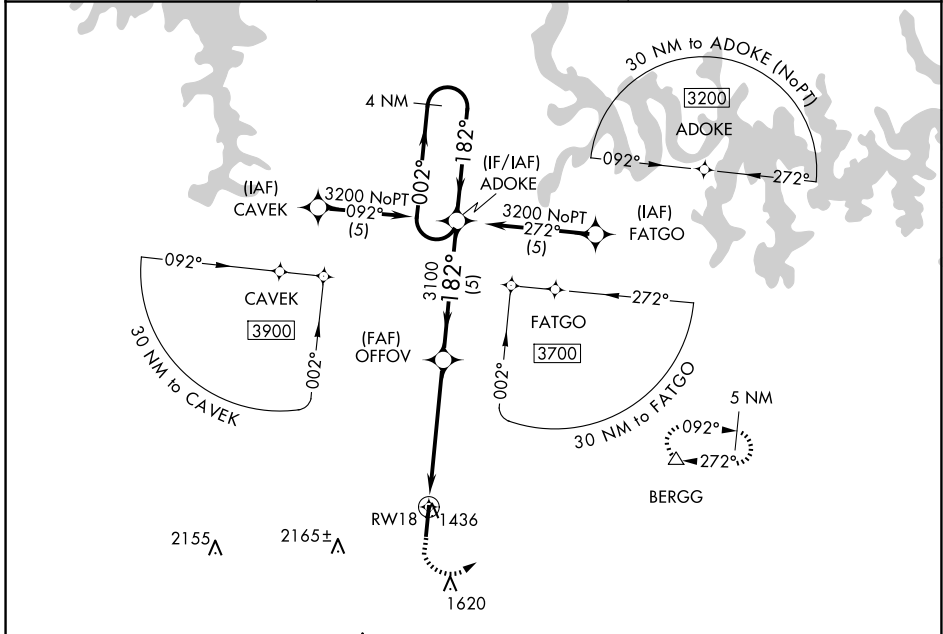
APP CRS	Rwy Ldg	6161
182°	TDZE	1365
	Apt Elev	1365

RNAV (GPS) RWY 18

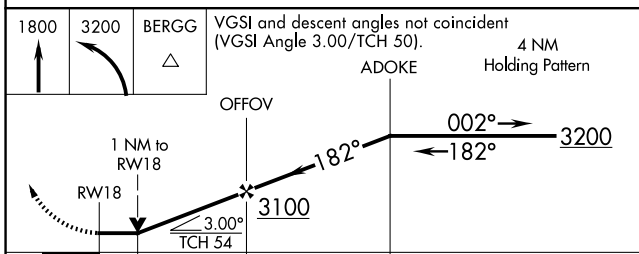
BOONE COUNTY (HRO)

RNP APCH.	MISSED APPROACH: Climb to 1800 then climbing left turn to 3200 direct BERGG and hold.
	Rwy 18 helicopter visibility reduction below 3/4 SM NA.

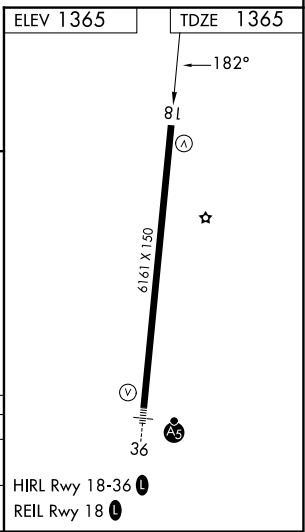
ASOS 121.125	MEMPHIS CENTER 126.85 281.55	UNICOM 123.0 (CTAF) 0
------------------------	--	---------------------------------



2155 Δ	2165 \pm Δ	RW18 Δ 1436	1620 Δ
Δ 2458	Δ 2359		
Δ 2470	Δ 2652		
			2326 Δ



CATEGORY	A	B	C	D
LNAV MDA	1720-1 355 (400-1)			
CIRCLING	1840-1 475 (500-1)	1860-1 495 (500-1)	2340-3 975 (1000-3)	2560-3 1195 (1200-3)



SC-1, 11 JUN 2026 to 09 JUL 2026

SC-1, 11 JUN 2026 to 09 JUL 2026