

WAAS CH 93711 W36A	APP CRS 002°	Rwy Ldg 6161 TDZE 1351 Apt Elev 1365
--	------------------------	---

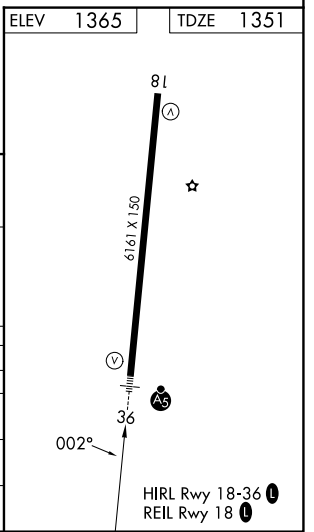
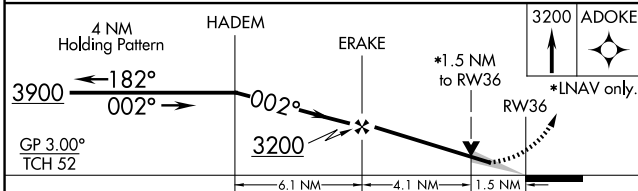
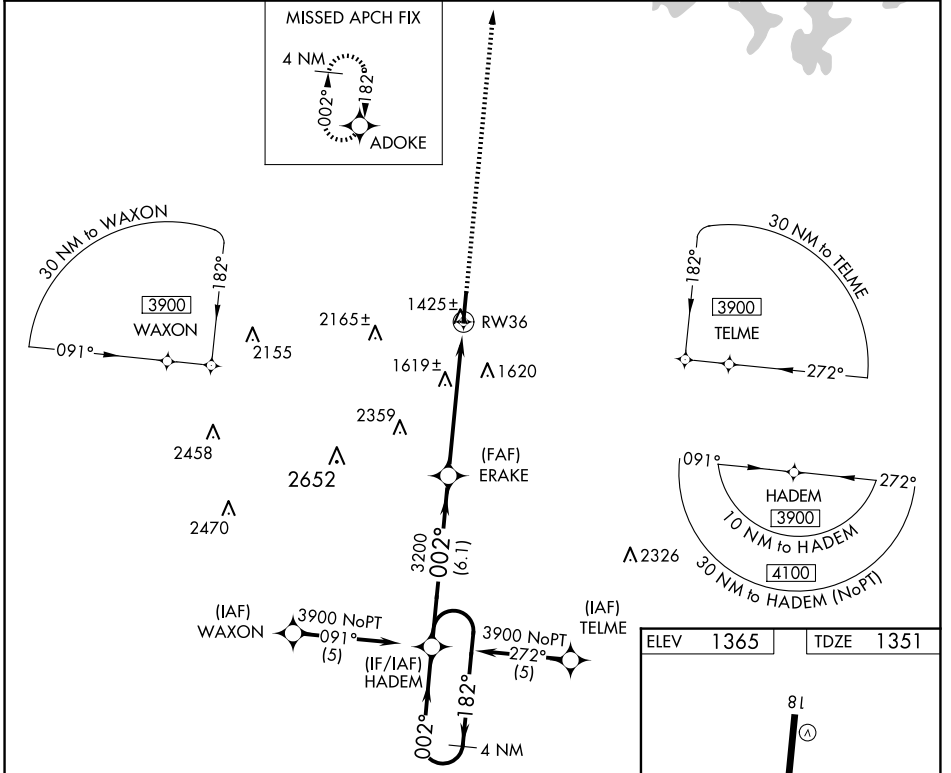
RNAV (GPS) RWY 36

BOONE COUNTY (HRO)

▼ For uncompensated Baro-VNAV systems, LNAV/VNAV NA below -17°C (2°F) or above 46°C (114°F). DME/DME RNP-0.3 NA. VDP and Baro-VNAV NA when using Mountain Home altimeter setting. When local altimeter setting not received, use Mountain Home altimeter setting and increase all DA 139 feet and all MDA 140 feet, increase LPV all Cats and LNAV and Circling Cat C and D visibility ¼ mile, increase LNAV/VNAV all Cats visibility ½ mile. For inoperative MALSR when using Mountain Home altimeter setting, increase LPV all Cats visibility to 1¼.

MALSR MISSED APPROACH: Climb to 3200 direct ADOKE and hold.

ASOS 121.125	MEMPHIS CENTER 126.85 281.55	UNICOM 123.0 (CTAF)
------------------------	--	-------------------------------



CATEGORY	A	B	C	D
LPV DA		1601-1/2	250 (300-1/2)	
LNAV/VNAV DA		1815-1	464 (500-1)	
LNAV MDA	1880-1/2 529 (600-1/2)	1880-1 529 (600-1)	1880-1 529 (600-1/4)	1880-1 529 (600-1/4)
CIRCLING	1880-1 515 (600-1)	2340-3 975 (1000-3)	2560-3 1195 (1200-3)	

SC-1, 11 JUN 2026 to 09 JUL 2026

SC-1, 11 JUN 2026 to 09 JUL 2026