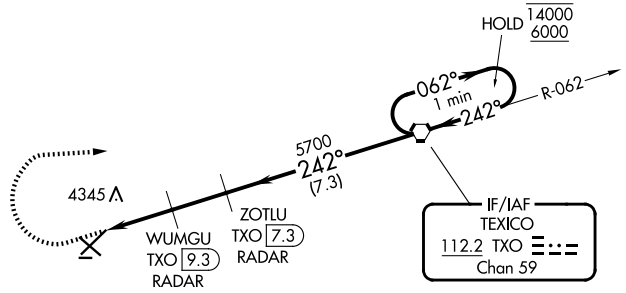


VORTAC TXO <b>112.2</b> Chan <b>59</b>	APP CRS <b>242°</b>	Rwy Ldg TDZE Apt Elev <b>7200</b> <b>4214</b> <b>4216</b>
--	------------------------	--

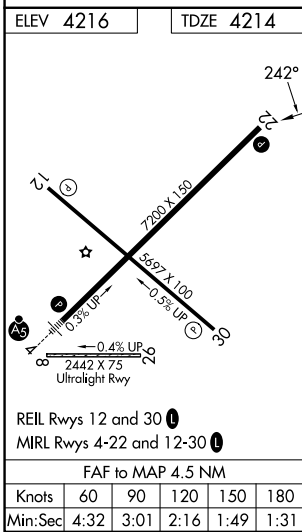
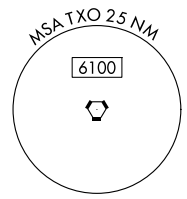
# VOR RWY 22

CLOVIS RGNL (CVN)

DME or RADAR required.		MISSED APPROACH: Climb to 4700 then climbing right turn to 6000 direct TXO VORTAC and hold.
Circling NA to Rwy 8 and 26.		
AWOS-3PT <b>135.375</b>	CANNON APP CON <b>118.425 352.1</b>	UNICOM <b>122.8 (CTAF) 0</b>



NoPT for arrival on TXO VORTAC  
airway radials 040 CW 124.



4700	6000	TXO		
ZOTLU TXO (7.3) RADAR		TXO VORTAC One Minute Holding Pattern		
WUMGU TXO (9.3) RADAR		TXO (10.8)		
5040		5700		
1.1 NM		1.4 NM		
2 NM		7.3 NM		
CATEGORY	A	B	C	D
S-22	4600-1	386 (400-1)	4600-1½	386 (400-1½)
CIRCLING	4680-1	464 (500-1)	4700-1½	4820-2
			484 (500-1½)	604 (700-2)

SW-1, 11 JUN 2026 to 09 JUL 2026

SW-1, 11 JUN 2026 to 09 JUL 2026