

VOR/DME SWO <b>108.4</b> Chan 21	APP CRS <b>356°</b>	Rwy Idg TDZE Apt Elev <b>7401</b> <b>966</b> <b>1000</b>
--	------------------------	---

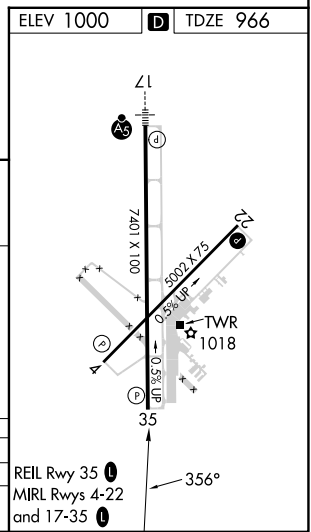
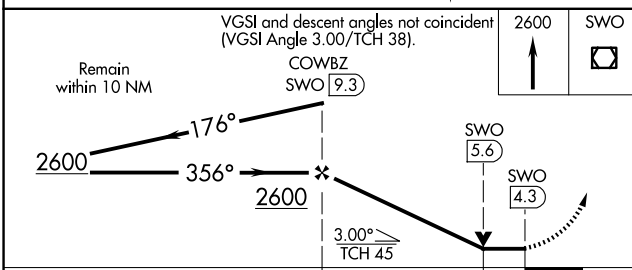
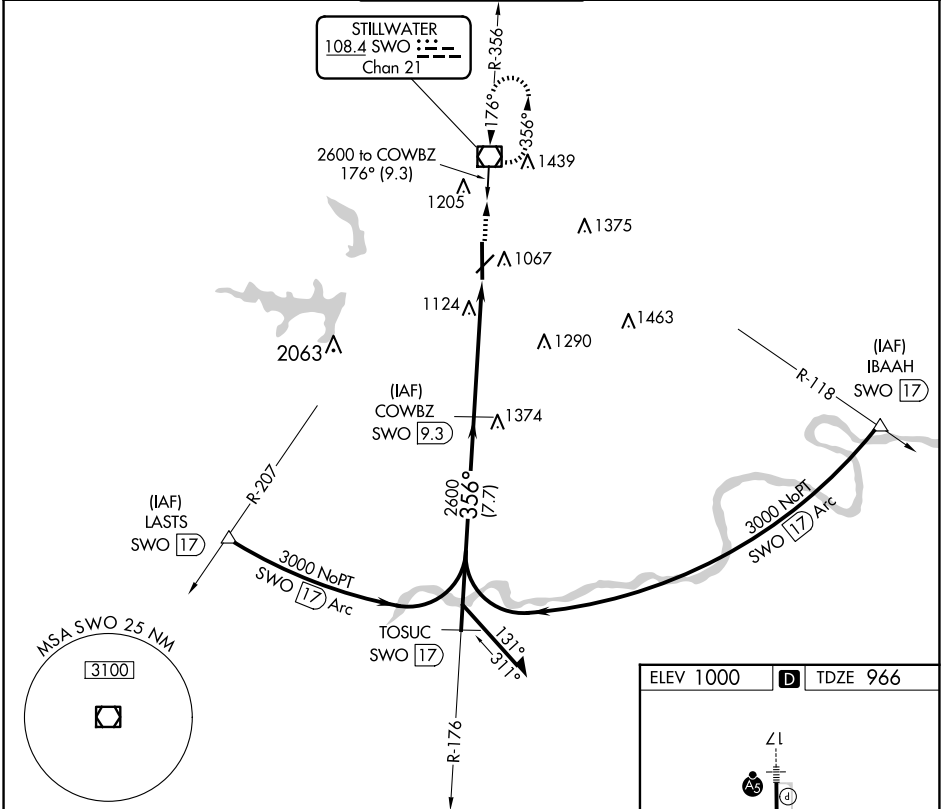
# VOR/DME RWY 35

STILLWATER RGNL (SWO)

**⚠** When local altimeter setting not received, use Ponca City Rgnl altimeter setting and increase all MDA 80 feet; S-35 Cats C/D visibility ¼ mile; Circling Cat D visibility ½ mile. VDP NA with Ponca City altimeter setting.

**MISSED APPROACH:** Climb to 2600 direct SWO VOR/DME and hold.

ASOS <b>135.725</b>	KANSAS CITY CENTER <b>127.8 319.1</b>	STILLWATER TOWER ★ <b>125.35 (CTAF) 0</b>	GND CON <b>121.6</b>	UNICOM <b>122.95</b>
------------------------	--	--	-------------------------	-------------------------



CATEGORY	A	B	C	D
S-35	1380-1	414 (400-1)	1380-1¼	414 (400-1¼)
<b>CIRCLING</b>	1420-1 420 (500-1)	1460-1 460 (500-1)	1520-1½ 520 (600-1½)	1740-2¼ 740 (800-2¼)

SC-1, 11 JUN 2026 to 09 JUL 2026

SC-1, 11 JUN 2026 to 09 JUL 2026