

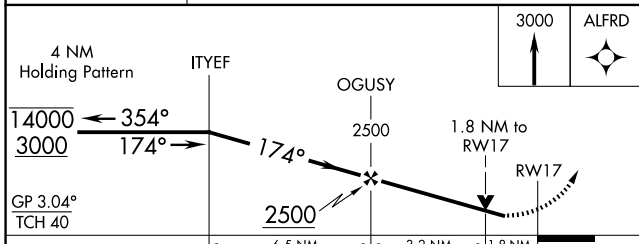
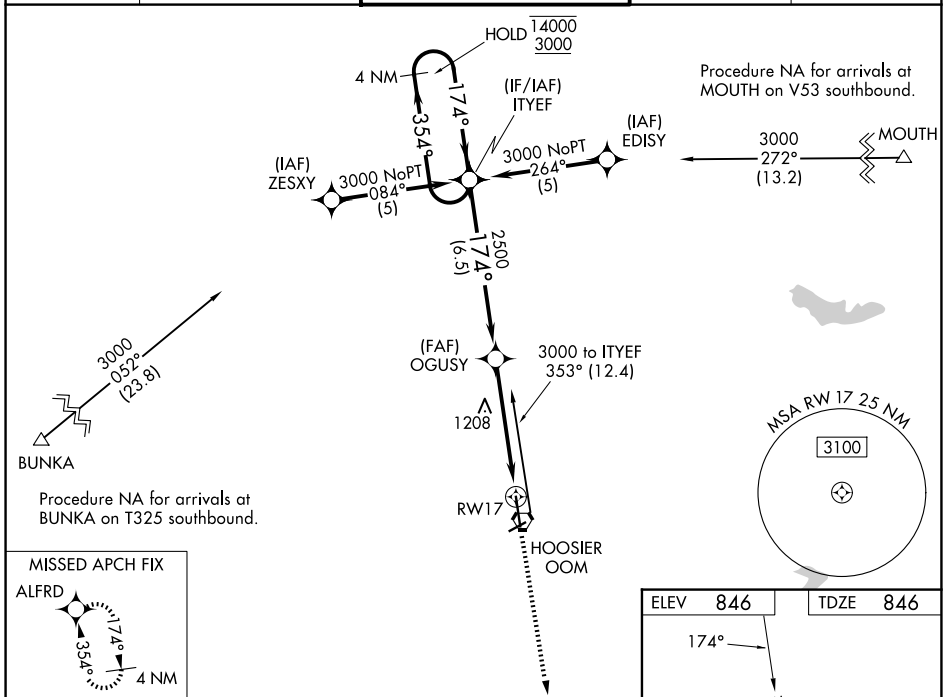
WAAS CH 56412 W17A	APP CRS 174°	Rwy Ldg TDZE 846 Apt Elev 846
--	------------------------	---

RNAV (GPS) RWY 17

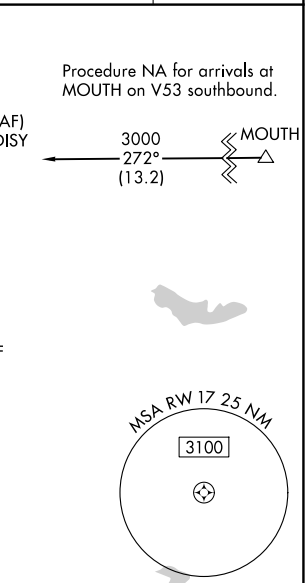
MONROE COUNTY (BMG)

RNP APCH - GPS.	<p>▼ Rwy 17 helicopter visibility reduction below $\frac{3}{4}$ SM NA. For uncompensated Baro-VNAV systems, LNAV/VNAV NA below -16°C or above 54°C. Baro-VNAV and VDP NA when using HUF altimeter setting. When local altimeter setting not received, use HUF altimeter setting and increase LPV DA to 1355 feet and all visibilities $\frac{1}{4}$ SM; increase LNAV/VNAV DA to 1530 feet and all visibilities $\frac{3}{8}$ SM; increase all MDAs 140 feet and LNAV visibility Cats B/C/D $\frac{1}{4}$ SM.</p>	MISSED APPROACH: Climb to 3000 direct ALFRD and hold.
-----------------	--	---

ASOS 134.525	HULMAN APP CON 128.025 339.8	BLOOMINGTON TOWER * 120.775 (CTAF) 0	GND CON 121.9	UNICOM 122.95
------------------------	--	--	-------------------------	-------------------------



CATEGORY	A	B	C	D
LPV DA		1230-1 $\frac{1}{8}$	384 (400-1 $\frac{1}{8}$)	
LNAV/VNAV DA		1405-1 $\frac{5}{8}$	559 (600-1 $\frac{5}{8}$)	
LNAV MDA	1460-1	614 (700-1)	1460-1 $\frac{3}{4}$	614 (700-1 $\frac{3}{4}$)



EC-2, 11 JUN 2026 to 09 JUL 2026

EC-2, 11 JUN 2026 to 09 JUL 2026