

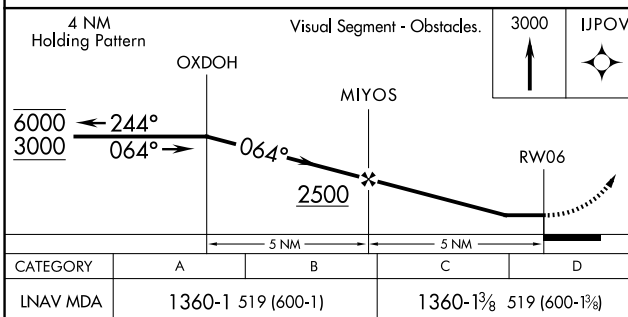
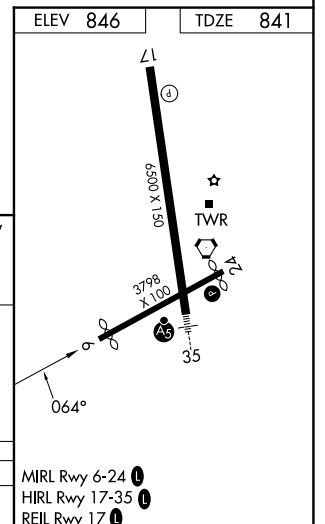
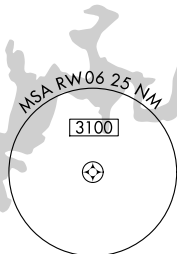
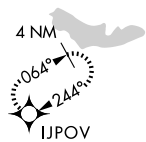
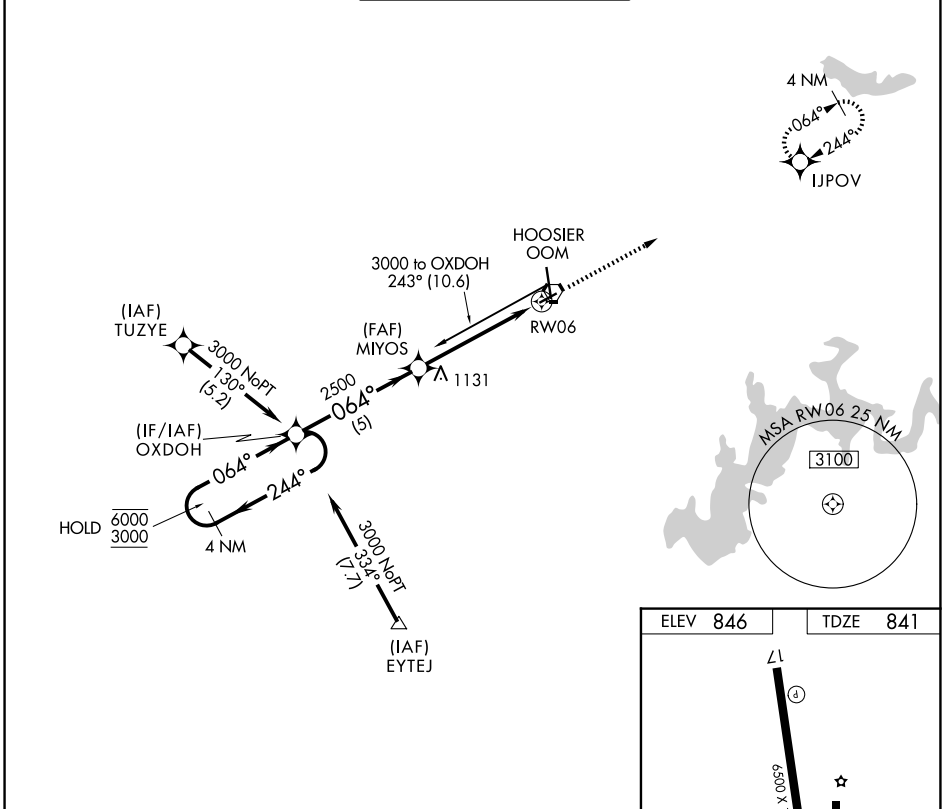
APP CRS	Rwy Ldg	3494
064°	TDZE	841
	Apt Elev	846

RNAV (GPS) RWY 6

MONROE COUNTY (BMG)

RNP APCH - GPS.		<p>▽ Rwy 6 helicopter visibility reduction below 1 SM NA. Procedure NA at night.</p> <p>▲ NA When local altimeter setting not received, use HUF altimeter setting and increase all MDAs 140 feet and visibility Cats C and D ½ SM.</p>	MISSED APPROACH: Climb to 3000 direct IJPOV and hold.	
ASOS	HULMAN APP CON		BLOOMINGTON TOWER ★	GND CON

ASOS	HULMAN APP CON	BLOOMINGTON TOWER ★	GND CON	UNICOM
134.525	128.025 339.8	120.775 (CTAF) 0	121.9	122.95



CATEGORY	A	B	C	D
LNAV MDA	1360-1	519 (600-1)	1360-1 $\frac{3}{8}$	519 (600-1 $\frac{3}{8}$)

MRL Rwy 6-24 0
HIRL Rwy 17-35 0
REIL Rwy 17 0

EC-2, 11 JUN 2026 to 09 JUL 2026

EC-2, 11 JUN 2026 to 09 JUL 2026