

VOR/DME IDJ <b>110.0</b> Chan <b>37</b>	APP CRS <b>126°</b>	Rwy Ldg TDZE <b>1391</b> Apt Elev <b>1391</b>
---	------------------------	---

# VOR/DME RWY 13

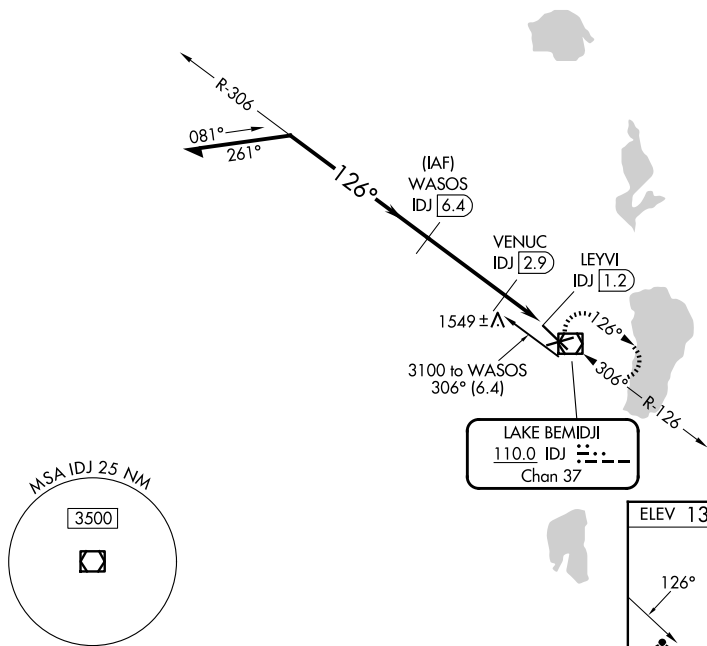
BEMIDJI RGNL (BJI)

**NA** When local altimeter setting not received, use Park Rapids altimeter setting and increase all MDA 100 feet, increase S-13 Cat C and D visibility 1/4 mile. VDP NA with Park Rapids altimeter setting. For inoperative MALSRS, increase S-13 Cat A and B visibility to 1 mile and Cat C and D visibility to 1 1/2 mile. For inoperative MALSRS when using Park Rapids altimeter setting, increase S-13 Cat A and B visibility to 1 mile and Cat C and D visibility to 1 3/8 mile. Helicopter visibility reduction below 3/4 SM not authorized.

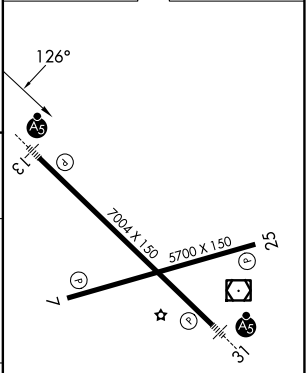
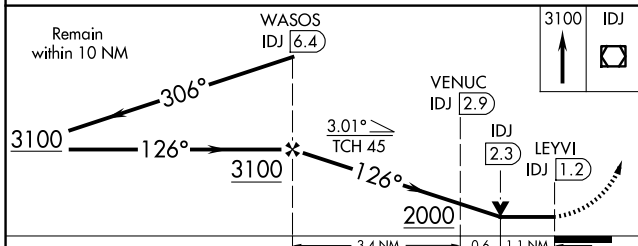
**MALSRS**  
MISSED APPROACH:  
Climb to 3100 direct IDJ VOR/DME and hold, continue climb-in-hold to 3100.

AWOS-3 <b>119.275</b>	MINNEAPOLIS CENTER <b>134.75 251.1</b>	UNICOM <b>122.8 (CTAF)</b>
--------------------------	---	-------------------------------

## RADAR REQUIRED



ELEV 1391	<b>D</b> TDZE 1391
-----------	--------------------



CATEGORY	A	B	C	D
S-13	1800-3/4 409 (500-3/4)			
CIRCLING	1840-1 449 (500-1)	1860-1 469 (500-1)	1860-1 1/2 469 (500-1 1/2)	1960-2 569 (600-2)

HIRL Rwy 13-31  
MRL Rwy 7-25  
REIL Rws 7 and 25

NC-1, 11 JUN 2026 to 09 JUL 2026

NC-1, 11 JUN 2026 to 09 JUL 2026