

# COPTER VOR 069°

LOWE AHP (FORT RUCKER) (KLOR)

VOR EDN <b>116.6</b>	APCH CRS <b>069°</b>	Rwy Idg TDZE Arprt Elev <b>N/A</b> <b>N/A</b> <b>294</b>
-------------------------	-------------------------	---

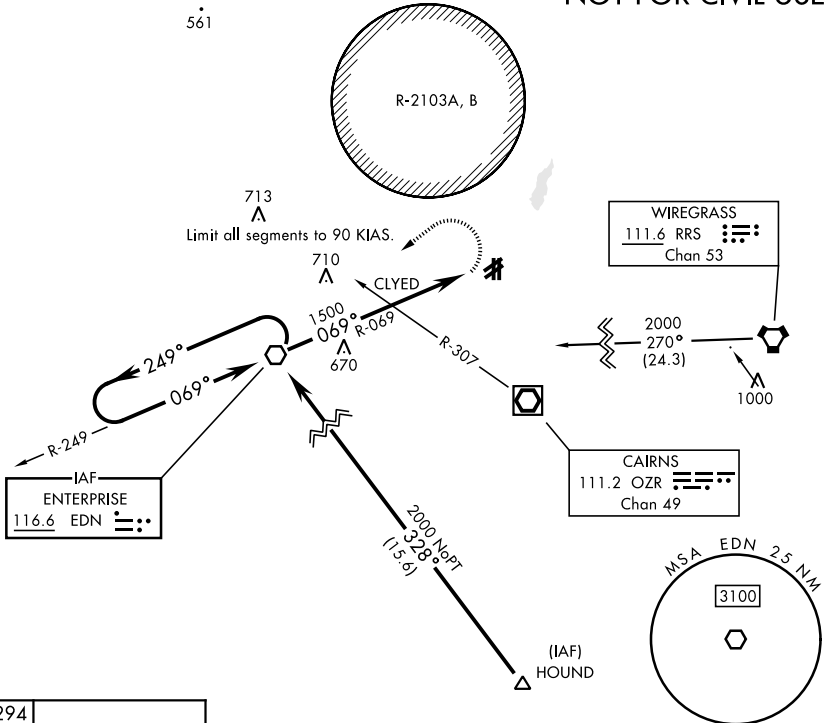
[USA]

When local altimeter setting not received, use Cairns AAF altimeter setting. Helicopter visibility reduction below 3/4 mile not authorized.

MISSED APPROACH: Climbing left turn to 2000 direct to EDN VOR and hold.

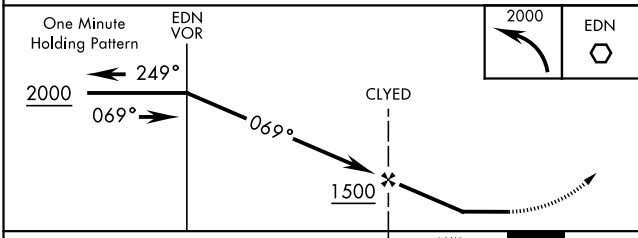
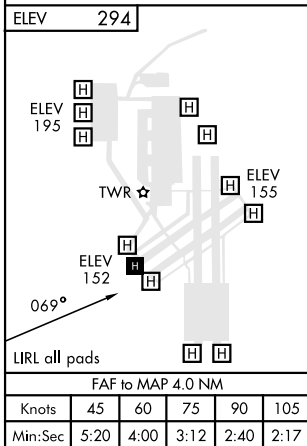
ATIS <b>361.1</b>	CAIRNS APP CON <b>133.45 239.275</b>	TOWER★ <b>141.3 289.15</b>	GND CON <b>357.15</b>
----------------------	---	-------------------------------	--------------------------

**NOT FOR CIVIL USE**



SE-4, 11 JUN 2026 to 09 JUL 2026

SE-4, 11 JUN 2026 to 09 JUL 2026



CATEGORY	COPTER		
H-069°	840-1	546	(600-1)
H-069°	860-1	566	(600-1)

CAIRNS AAF ALTIMETER SETTING MINIMUMS

# COPTER VOR 069°