

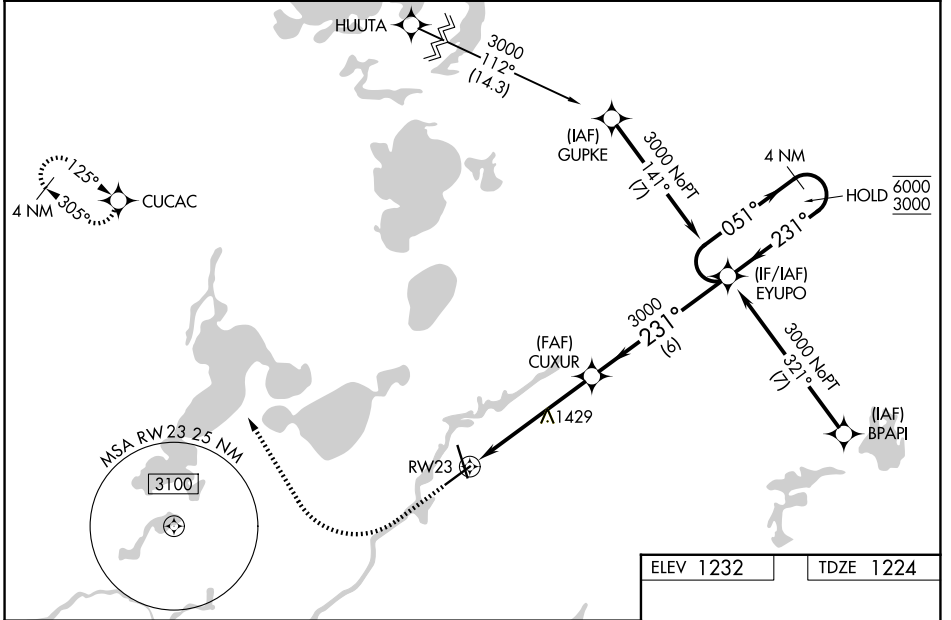
WAAS CH 82502 W23A	APP CRS 231°	Rwy Ldg TDZE 1224 Apt Elev 1232	6512
--	------------------------	---	-------------

RNAV (GPS) RWY 23

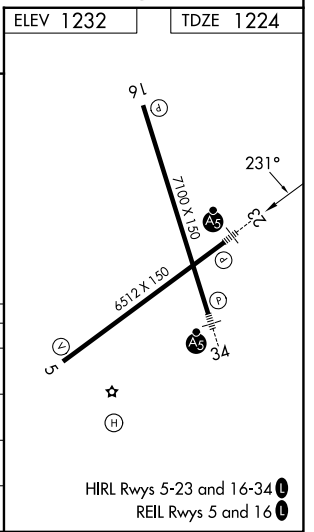
BRainerd LAKES RGNL (B.R.D)

RNP APCH - GPS.		MALSR	MISSED APPROACH: Climb to 1800 then climbing right turn to 3300 direct CUCAC and hold.
<p>⚠ For uncompensated Baro-VNAV systems, LNAV/VNAV NA below -21°C or above 54°C. Baro-VNAV and VDP NA when using AIT altimeter setting. When local altimeter setting not received, use AIT altimeter setting and increase LPV DA to 1476 feet; increase LNAV/VNAV DA to 1553 feet; increase all MDAs 60 feet and LNAV visibility Cat C/D 1/2 SM, and Circling visibility Cat C/D 1/2 SM. For inop ALS when using AIT altimeter setting, increase LNAV/VNAV Cats C/D visibility to 1 1/2 SM. For inop ALS, increase LNAV/VNAV all Cats visibility 7/8 SM.</p>			

ASOS 126.775	MINNEAPOLIS CENTER 118.05 239.0	UNICOM 122.7(CTAF) 0
------------------------	---	--------------------------------



		CUXUR	EYUPO	4 NM Holding Pattern
		3000	3000	6000 / 3000
		231°	051°	231°
		GP 3.00°		TCH 50
CATEGORY	A	B	C	D
LPV DA		1424-1/2	200 (200-1/2)	
LNAV/VNAV DA		1501-1/2	277 (300-1/2)	
LNAV MDA	1680-1/2	456 (500-1/2)	1680-7/8	456 (500-7/8)
CIRCLING	1700-1	468 (500-1)	1780-1 1/2 548 (600-1 1/2)	1860-2 628 (700-2)



NC-1, 11 JUN 2026 to 09 JUL 2026

NC-1, 11 JUN 2026 to 09 JUL 2026