

WAAS CH 78147 W35B	APP CRS 354°	Rwy Ldg 3901 TDZE 844 Apt Elev 845
--	------------------------	---

RNAV (GPS) RWY 35R

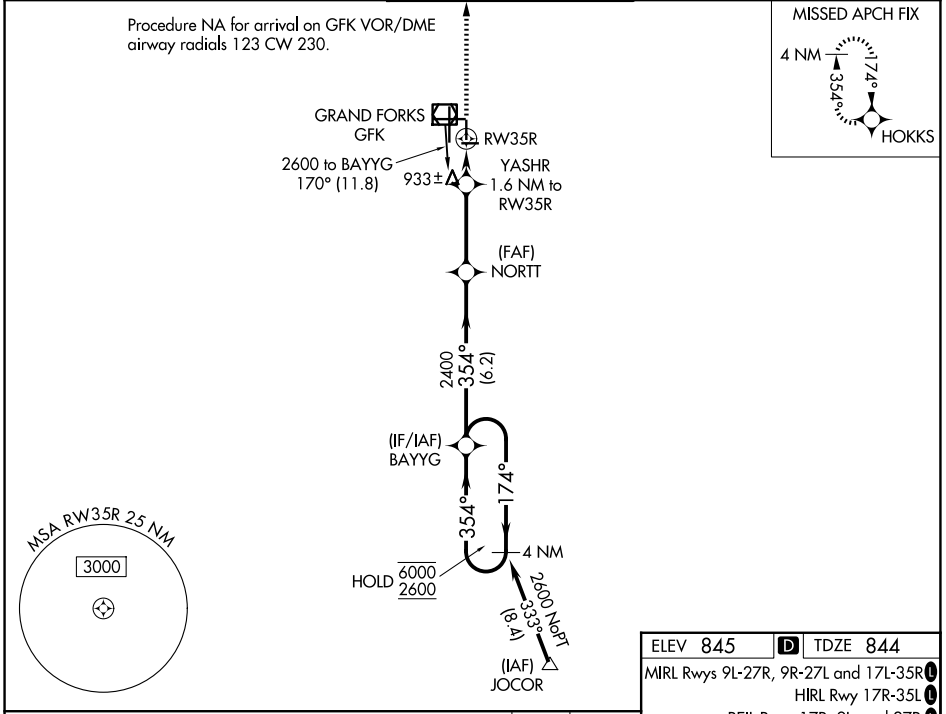
GRAND FORKS INTL (GFK)

RNP APCH - GPS.

⚠ For uncompensated Baro-VNAV systems, LNAV/VNAV NA below -22°C or above 54°C.

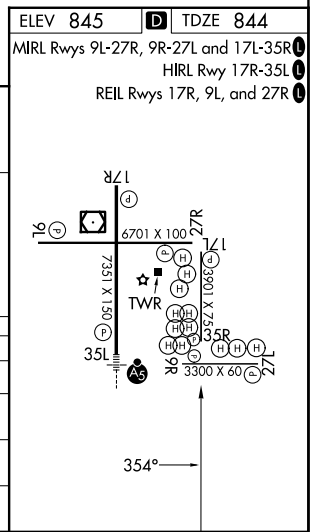
MISSED APPROACH: Climb to 2600 direct HOKKS and hold.

ATIS 119.4	GRAND FORKS APP CON * 118.1 318.1	GRAND FORKS TOWER * 118.4 (CTAF) 350.35	GND CON 124.575	UNICOM 122.95
----------------------	---	---	---------------------------	-------------------------



VGSI and RNAV glidepath not coincident (VGSI Angle 3.00/TCH 21).

4 NM Holding Pattern	BAYYG	NORT	YASHR	HOKKS
6000 ← 174°		2400	1.6 NM to RW35R	2600
2600 → 354°			1.1 NM to RW35R	
GP 3.00°		2400		
TCH 40		1400		
	6.2 NM	3.1 NM	0.6	1.1 NM
CATEGORY	A	B	C	D
LPV DA		1044-3/4	200 (200-3/4)	
LNAV/VNAV DA		1094-3/4	250 (300-3/4)	
LNAV MDA		1200-1	356 (400-1)	
CIRCLING	1260-1 415 (500-1)	1300-1 455 (500-1)	1400-1 1/2 555 (600-1 1/2)	1420-2 575 (600-2)



NC-1, 11 JUN 2026 to 09 JUL 2026

NC-1, 11 JUN 2026 to 09 JUL 2026