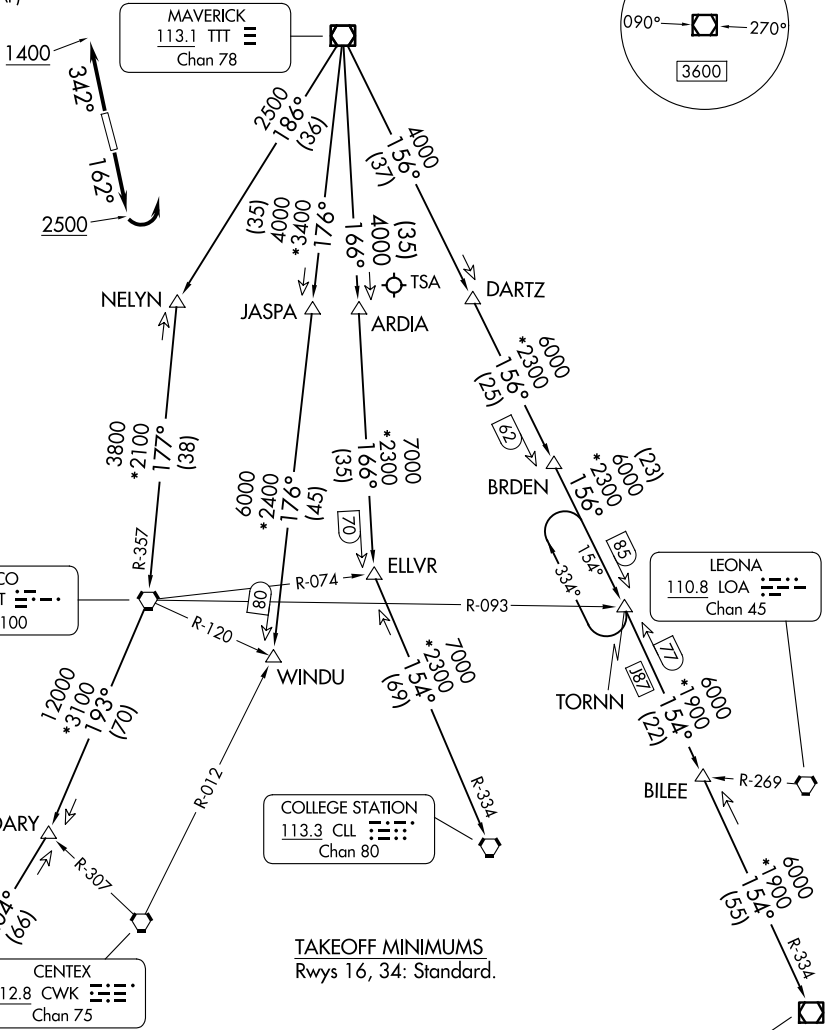
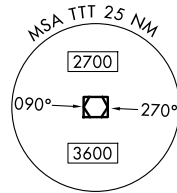


JOE POOL EIGHT DEPARTURE

LONE STAR DEP CON
135.975 379.9
CLNC DEL
121.875
CLNC DEL (When twr closed)
118.85
GND CON
121.875
ARLINGTON TOWER ★
128.625 (CTAF)

RADAR and DME required.

**TOP ALTITUDE:
ASSIGNED BY ATC**



TAKEOFF MINIMUMS
Rwys 16, 34: Standard.

(CONTINUED ON FOLLOWING PAGE)

NOTE: Chart not to scale.

SC-2, 11 JUN 2026 to 09 JUL 2026

SC-2, 11 JUN 2026 to 09 JUL 2026

JOE POOL EIGHT DEPARTURE