

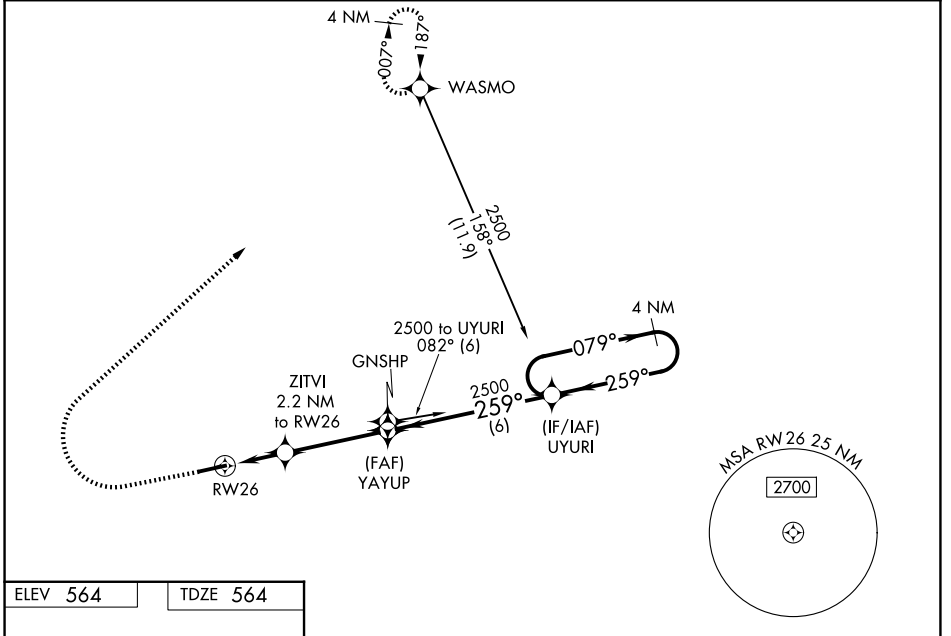
| | | |
|--|------------------------|---|
| WAAS CH 82221 W26A | APP CRS 259° | Rwy Ldg TDZE 564 Apt Elev 564 |
|--|------------------------|---|

RNAV (GPS) RWY 26

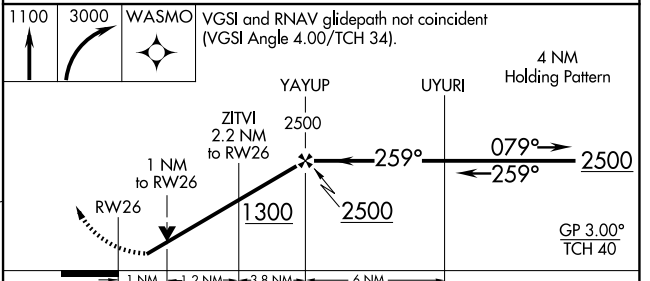
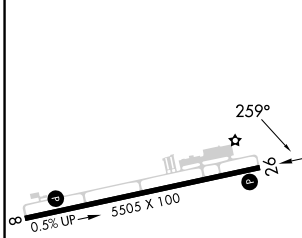
HOPKINSVILLE-CHRISTIAN COUNTY (HVC)

| | | |
|-----------------|---|--|
| RNP APCH - GPS. | <p>⚠ NA Circling Rwy 8 NA at night. For uncompensated Baro-VNAV systems, LNAV/VNAV NA below -16°C or above 54°C. Baro-VNAV and VDP NA when using Clarksville altimeter setting. Helicopter visibility reduction below 3/4 SM NA. When local altimeter setting not received, use Clarksville altimeter setting and increase LPV DA to 851 feet and all visibilities 1/8 SM; increase LNAV/VNAV DA to 1033 feet and all visibilities 1/8 SM; increase all MDAs 40 feet and Circling visibility Cat C 1/4 SM.</p> | <p>MISSED APPROACH: Climb to 1100 then climbing right turn to 3000 direct WASMO and hold.</p> |
|-----------------|---|--|

| | | |
|--------------------------|--|---------------------------------|
| AWOS-3 132.575 | CAMPBELL APP CON 118.1 269.525 | UNICOM 122.8 (CTAF) 0 |
|--------------------------|--|---------------------------------|



| | |
|----------|----------|
| ELEV 564 | TDZE 564 |
|----------|----------|



| CATEGORY | A | B | C | D |
|--------------|--------|-------------|-----------------------|-------------------------------|
| LPV DA | | 814-7/8 | 250 (300-7/8) | |
| LNAV/VNAV DA | | 996-1 1/4 | 432 (500-1 1/4) | |
| LNAV MDA | 1040-1 | 476 (500-1) | 1040-1 3/8 | 476 (500-1 3/8) |
| CIRCLING | 1140-1 | 576 (600-1) | 1280-2 716 (800-2) | 1320-2 1/2 756 (800-2 1/2) |

MIRL Rwy 8-26 0
REIL Rwy 8 and 26 0

SE-1, 11 JUN 2026 to 09 JUL 2026

SE-1, 11 JUN 2026 to 09 JUL 2026