

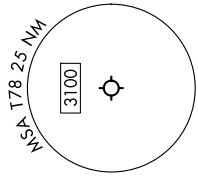
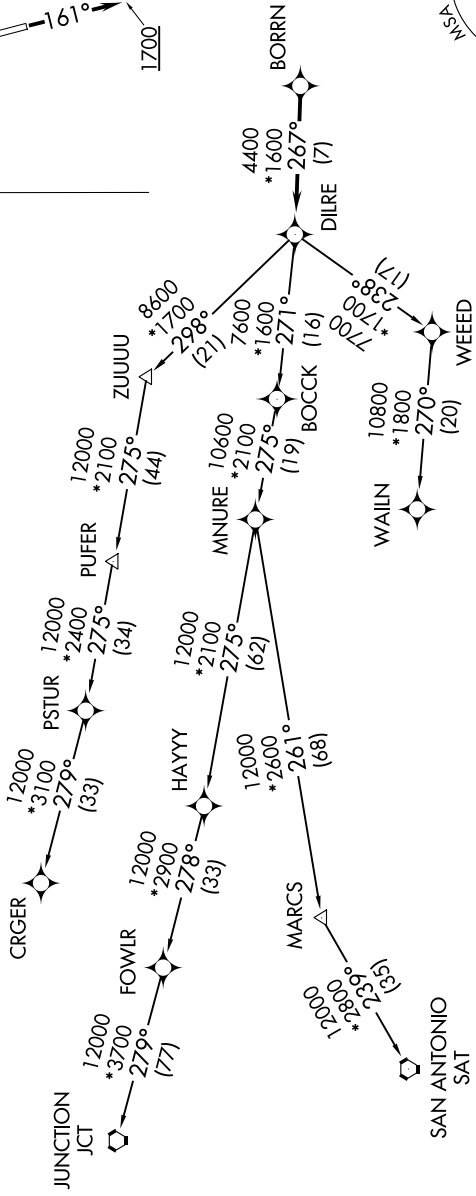
BORRN SIX DEPARTURE (RNAV)

9202 UN 60 of 2026 UN 14 '9-CC

CTAF
122.9
HOUSTON DEP CON
119.7 281.4

RNAV 1 - DME/DME/IRU or GPS.
RADAR required.

TAKEOFF MINIMUMS
Rwys 16, 34: Standard with minimum
climb of 500'/NM to 580.



NOTE: Chart not to scale.

NOTE: CRGR-TRANSITION ATC assigned only
for aircraft departing 54T, AXH, EFD, GLS,
HPY, IWS, LBX, LVJ, SGR, TME, T00, T41.

(CONTINUED ON FOLLOWING PAGE)

SC-5, 11 JUN 2026 to 09 JUL 2026

BORRN SIX DEPARTURE (RNAV)