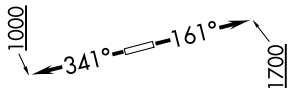


KARR SEVEN DEPARTURE (RNAV)

**TOP ALTITUDE:
ASSIGNED BY ATC**



SC-5, 11 JUN 2026 to 09 JUL 2026

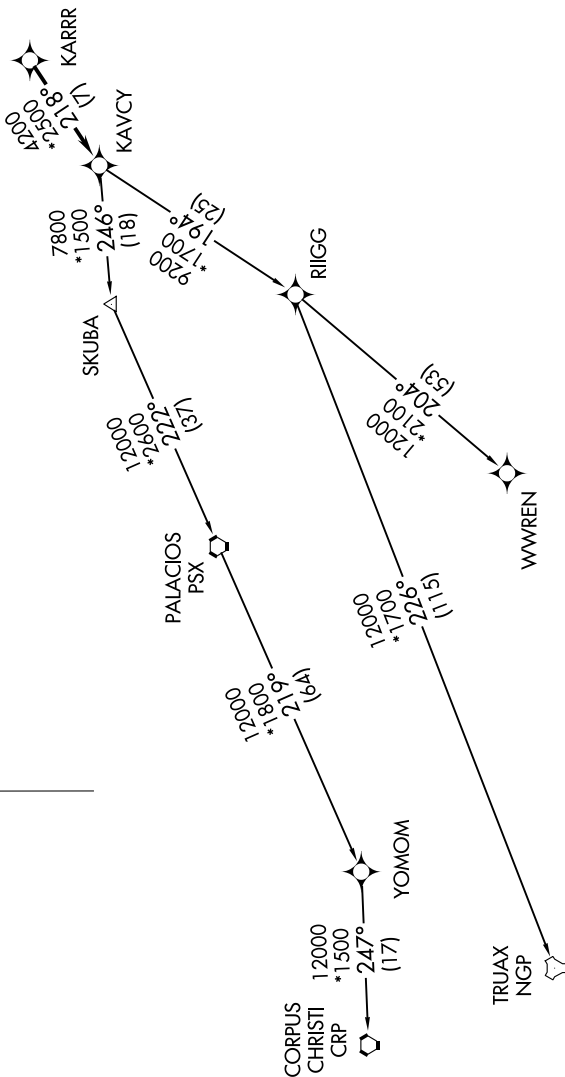
RNAV-1 DME/DME/IRU or GPS.
RADAR required.

TAKEOFF MINIMUMS

Rwys 16, 34: Standard with minimum climb of 500' per NM to 580.



CTAF
122.9
HOUSTON DEP CON
119.7 281.4



(NARRATIVE ON FOLLOWING PAGE)

NOTE: Chart not to scale.

SC-5, 11 JUN 2026 to 09 JUL 2026

KARR SEVEN DEPARTURE (RNAV)