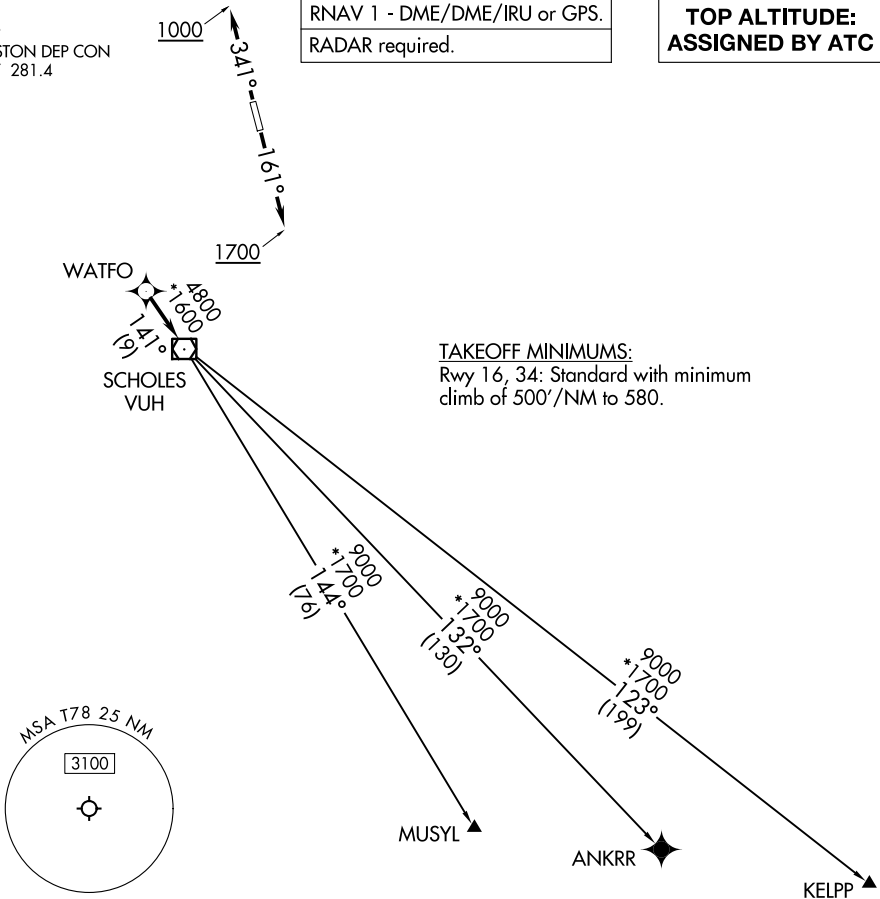


WATFO SIX DEPARTURE (RNAV)

CTAF
122.9
HOUSTON DEP CON
119.7 281.4

RNAV 1 - DME/DME/IRU or GPS.
RADAR required.

**TOP ALTITUDE:
ASSIGNED BY ATC**



TAKEOFF MINIMUMS:
Rwy 16, 34: Standard with minimum
climb of 500'/NM to 580.

SC-5, 11 JUN 2026 to 09 JUL 2026

SC-5, 11 JUN 2026 to 09 JUL 2026

NOTE: Chart not to scale.



DEPARTURE ROUTE DESCRIPTION

TAKEOFF RUNWAY 16: Climb on heading 161° to 1700, for RADAR vectors to WATFO, thence. . . .

TAKEOFF RUNWAY 34: Climb on heading 341° to 1000, for RADAR vectors to WATFO, thence. . . .

. . . .on track 141° to VUH VOR/DME, then on (transition). Maintain ATC assigned altitude.
Expect filed altitude 10 minutes after departure.

ANKRR TRANSITION (WATFO6.ANKRR)

KELPP TRANSITION (WATFO6.KELPP)

MUSYL TRANSITION (WATFO6.MUSYL)

WATFO SIX DEPARTURE (RNAV)