

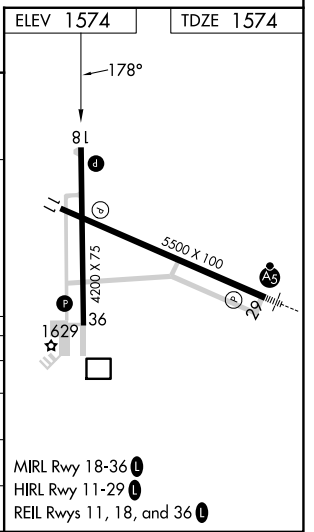
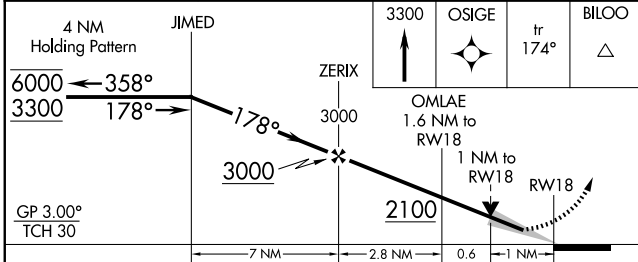
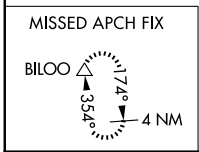
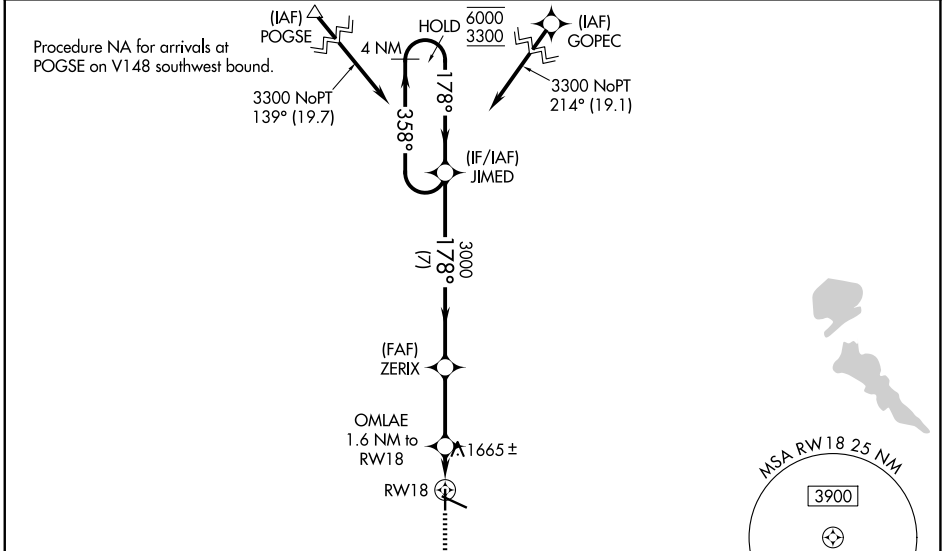
WAAS CH <b>93830</b> <b>W18A</b>	APP CRS <b>178°</b>	Rwy Ldg TDZE Apt Elev	<b>4200</b> <b>1574</b> <b>1574</b>
--	------------------------	-----------------------------	---

# RNAV (GPS) RWY 18

WORTHINGTON MUNI (OTG)

RNP APCH-GPS. ▼ For uncompensated Baro-VNAV systems, LNAV/VNAV NA ▲ below -25°C or above 54°C.	MISSED APPROACH: Climb to 3300 direct OSIGE and on track 174° to BILOO and hold.
--	--

AWOS-3PT <b>121.075</b>	MINNEAPOLIS CENTER <b>132.05 317.4</b>	UNICOM <b>122.8 (CTAF) 0</b>
----------------------------	---	---------------------------------



CATEGORY	A	B	C	D
LPV DA	1774-1 200 (200-1)			
LNAV/VNAV DA	1824-1 250 (300-1)			
LNAV MDA	1920-1 346 (400-1)			
CIRCLING	2100-1 526 (600-1)	2100-1½ 526 (600-1½)		2320-2½ 746 (800-2½)

NC-1, 11 JUN 2026 to 09 JUL 2026

NC-1, 11 JUN 2026 to 09 JUL 2026