

WAAS CH <b>45930</b> <b>W29A</b>	APP CRS <b>293°</b>	Rwy Ldg TDZE Apf Elev	<b>5500</b> <b>1570</b> <b>1574</b>
--	------------------------	-----------------------------	---

# RNAV (GPS) RWY 29

WORTHINGTON MUNI (OTG)

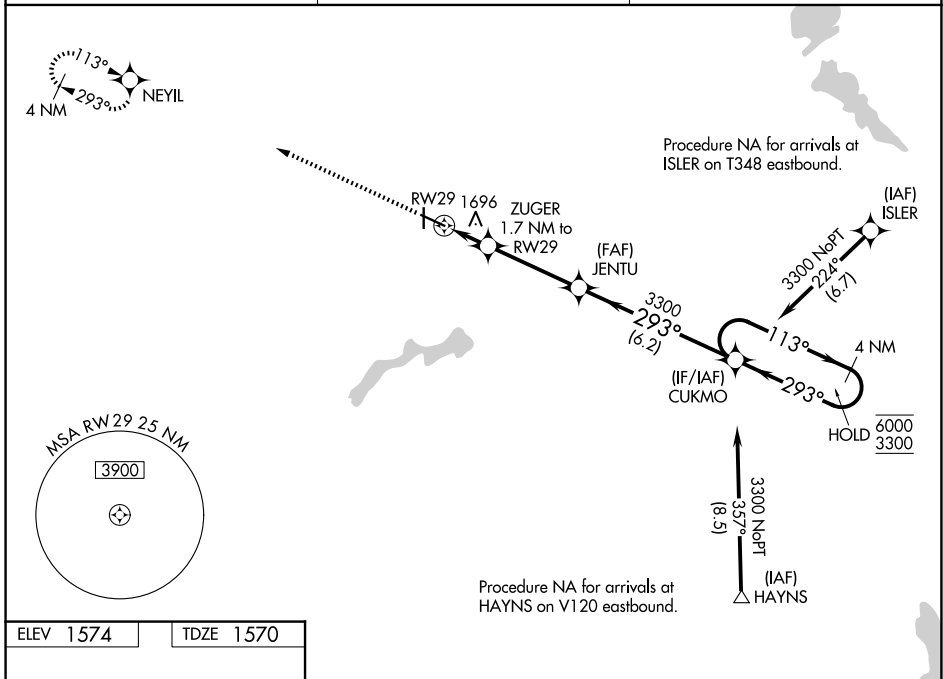
RNP APCH-GPS.

⚠ For uncompensated Baro-VNAV systems, LNAV/VNAV NA below -23°C or above 54°C. For inop ALS, increase LNAV/VNAV all Cats visibility to 7/5 SM.

MALSRL

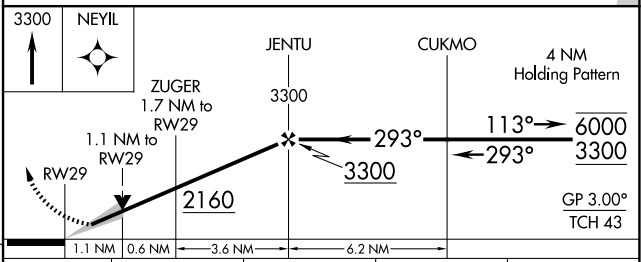
⚠ MISSED APPROACH: Climb to 3300 direct NEYIL and hold.

AWOS-3PT <b>121.075</b>	MINNEAPOLIS CENTER <b>132.05 317.4</b>	UNICOM <b>122.8 (CTAF) 0</b>
----------------------------	---	---------------------------------



ELEV 1574 TDZE 1570

MIRL Rwy 18-36  
HIRL Rwy 11-29  
REIL Rwys 11, 18, and 36



CATEGORY	A	B	C	D
LPV DA		1770-1/2	200 (200-1/2)	
LNAV/VNAV DA		1867-1/2	297 (300-1/2)	
LNAV MDA	1960-1/2	390 (400-1/2)	1960-5/8	390 (400-5/8)
CIRCLING	2100-1	526 (600-1)	2100-1 1/2 526 (600-1 1/2)	2320-2 1/2 746 (800-2 1/2)

NC-1, 11 JUN 2026 to 09 JUL 2026

NC-1, 11 JUN 2026 to 09 JUL 2026