

WAAS CH <b>73018</b> <b>W03A</b>	APP CRS <b>036°</b>	Rwy Ldg TDZE Apt Elev	<b>7030</b> <b>1057</b> <b>1066</b>
--	------------------------	-----------------------------	---

# RNAV (GPS) RWY 3

MANHATTAN RGNL (MHK)

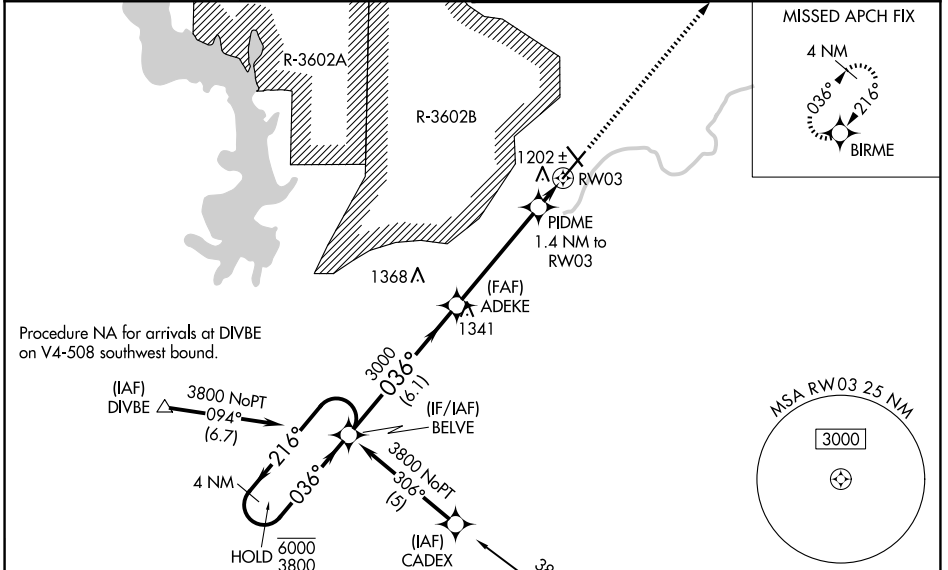
RNP APCH - GPS.

**⚠** Circling NA northwest of Rwy 3-21. Rwy 3 helicopter visibility reduction below 3/4 SM NA. Inop table does not apply to LPV all Cats. For uncompensated Baro-VNAV systems, LNAV/VNAV NA below -20°C or above 54°C. For inop ALS, increase LNAV/VNAV all Cats visibility to 1 1/2 SM, increase LNAV Cats A/B visibility to 1 SM and LNAV Cats C/D visibility to 1 1/2 SM.

MALSRL

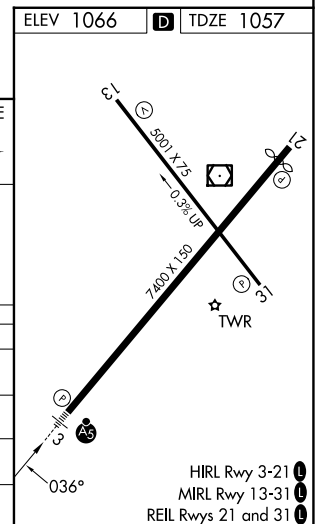
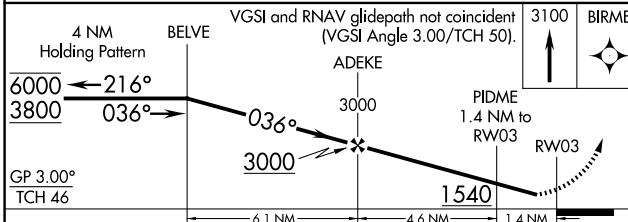
MISSED APPROACH: Climb to 3100 direct BIRME and hold.

ASOS <b>119.075</b>	MARSHALL AAF GCA* <b>121.25 269.05</b>	MANHATTAN TOWER* <b>118.55 (CTAF) 0</b>	GND CON <b>121.85</b>
------------------------	---	--	--------------------------



Procedure NA for arrivals at DIVBE on V4-508 southwest bound.

Procedure NA for arrivals at HEYDN on V77-280 northeast bound.



CATEGORY	A	B	C	D
LPV DA		1257-1/2	200 (200-1/2)	
LNAV/VNAV DA		1441-3/4	384 (400-3/4)	
LNAV MDA		1460-3/4	403 (400-3/4)	
CIRCLING	1540-1 474 (500-1)	1620-1 554 (600-1)	1920-2 1/2 854 (900-2 1/2)	1920-2 3/4 854 (900-2 3/4)

NC-2, 11 JUN 2026 to 09 JUL 2026

NC-2, 11 JUN 2026 to 09 JUL 2026