

# WLFRD TWO DEPARTURE (RNAV)

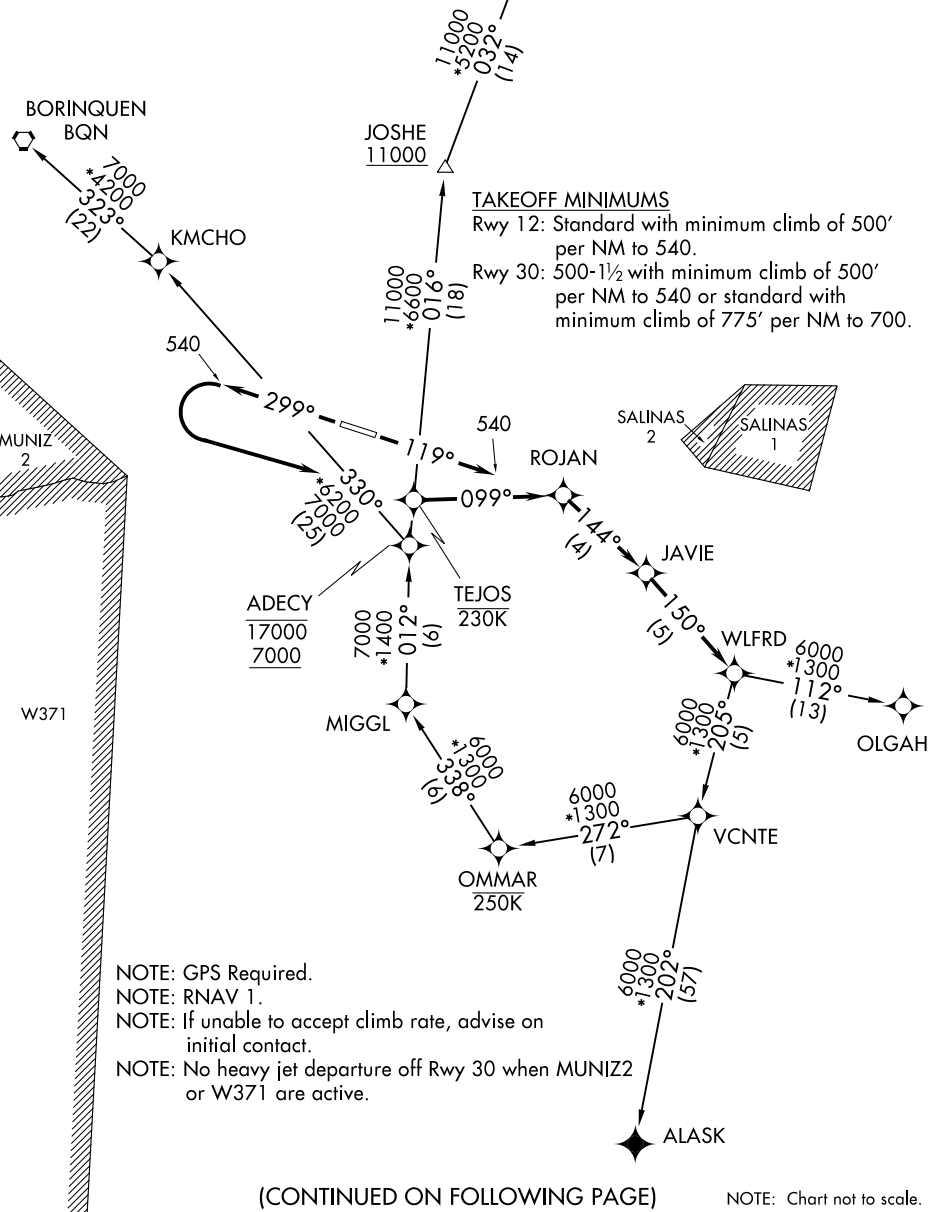
AL-5248 (FAA)

MERCEDITA (PSE)(TJPS)

PONCE, PUERTO RICO

CLNC DEL  
121.9  
CTAF  
122.7  
SAN JUAN CENTER  
118.75 269.0

**TOP ALTITUDE:  
ASSIGNED BY ATC**



SE-3, 11 JUN 2026 to 09 JUL 2026

SE-3, 11 JUN 2026 to 09 JUL 2026

NOTE: GPS Required.  
 NOTE: RNAV 1.  
 NOTE: If unable to accept climb rate, advise on initial contact.  
 NOTE: No heavy jet departure off Rwy 30 when MUNIZ2 or W371 are active.

(CONTINUED ON FOLLOWING PAGE)

NOTE: Chart not to scale.

# WLFRD TWO DEPARTURE (RNAV)

PONCE, PUERTO RICO

MERCEDITA (PSE)(TJPS)