

WAAS CH 99606 W25A	APP CRS 249°	Rwy Ldg 5350 TDZE 958 Apt Elev 958
--	------------------------	---

RNAV (GPS) RWY 25

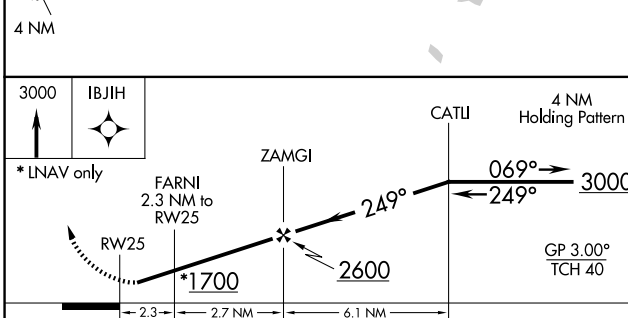
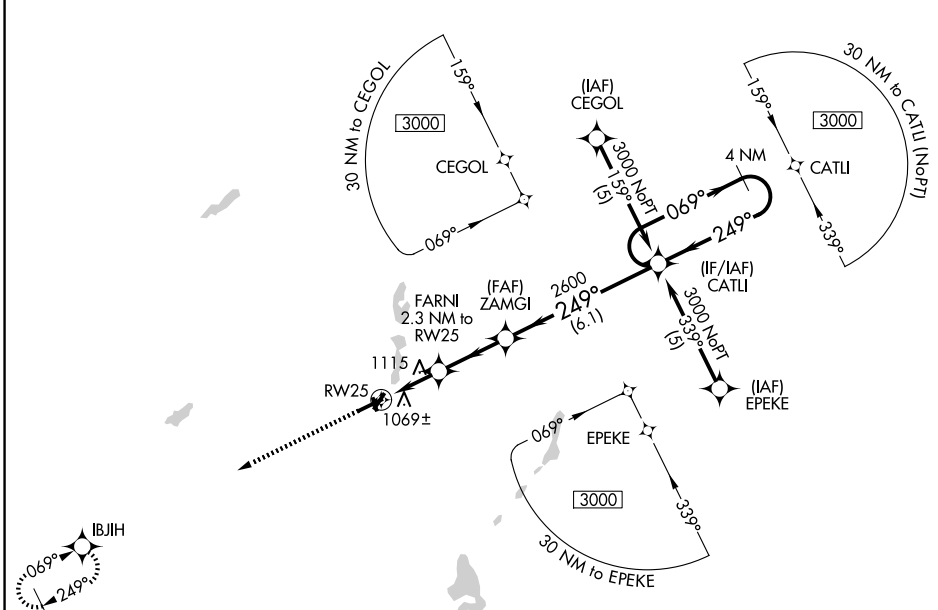
BRANCH COUNTY MEML (OEB)

RNP APCH

Rwy 25 helicopter visibility reduction below 1 SM NA. When local altimeter setting not received, use Sturgis altimeter setting and increase all DAs 48 feet and LPV visibility 1/4 mile all Cats and all MDAs 60 feet and LNAV Cat C visibility 1/4 mile. Baro-VNAV NA when using Sturgis altimeter setting. For uncompensated Baro-VNAV systems, LNAV/VNAV NA below -16°C or above 54°C. Circling NA to Rwy 16 and 34.

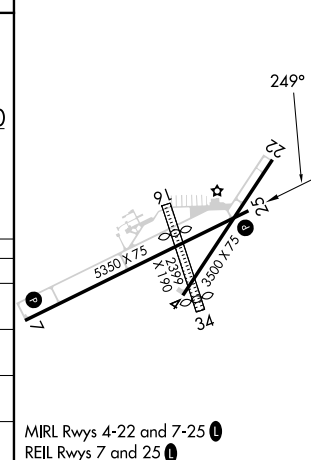
MISSED APPROACH:
Climb to 3000 direct
IBJIH and hold.

AWOS-3P 118,125	GREAT LAKES APP CON * 121.2 239.25	UNICOM 122.7 (CTAF) 0
---------------------------	--	---------------------------------



ELEV 958	TDZE 958
----------	----------

CATEGORY	A	B	C	D
LPV DA	1305-1¼	347 (400-1¼)		NA
LNAV/VNAV DA	1423-1¾	465 (500-1¾)		NA
LNAV MDA	1420-1	462 (500-1)	1420-1¼ 462 (500-1¼)	NA
CIRCLING	1420-1 462 (500-1)	1440-1 482 (500-1)	1560-1¾ 602 (700-1¾)	NA



EC-1, 11 JUN 2026 to 09 JUL 2026

EC-1, 11 JUN 2026 to 09 JUL 2026