

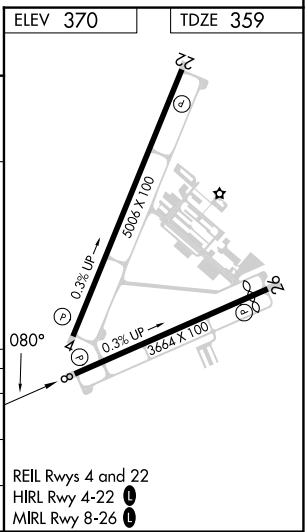
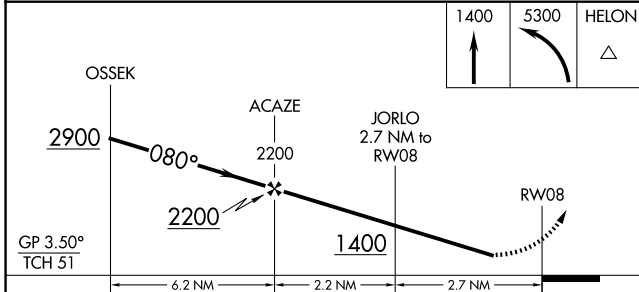
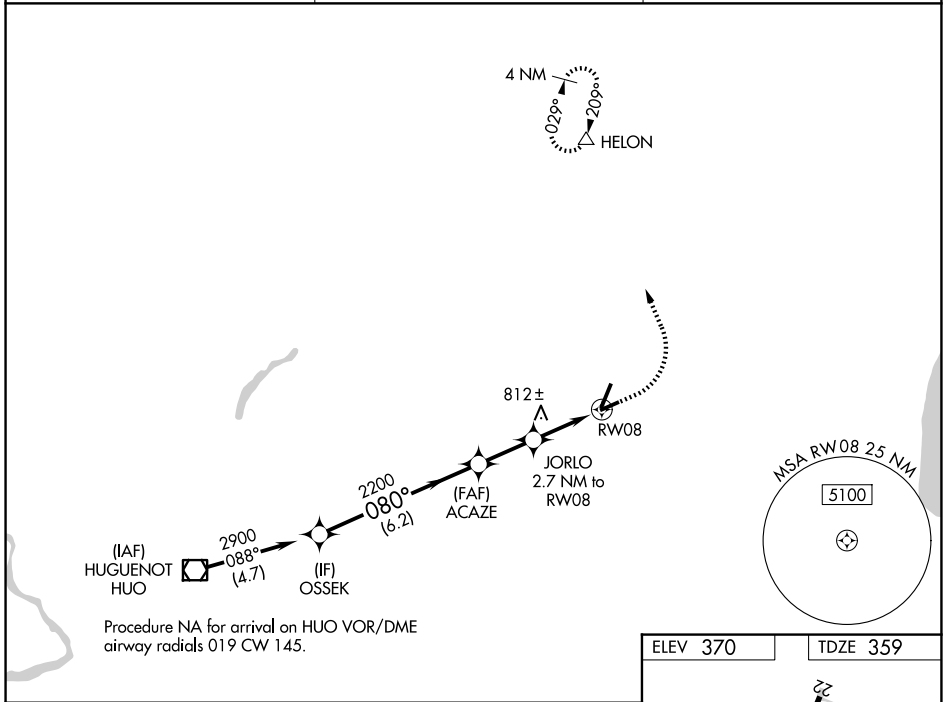
WAAS CH 77847 W08A	APP CRS 080°	Rwy Ldg 3664 TDZE 359 Apt Elev 370
--	------------------------	---

RNAV (GPS) RWY 8

ORANGE COUNTY (MGJ)

RNP APCH - GPS.	MISSED APPROACH: Climb to 1400 then climbing left turn to 5300 direct HELON and hold, continue climb in hold to 5300.
<p>▼ Rwy 8 helicopter visibility reduction below 1 SM NA. ▲ Straight-in Rwy 8 NA at night, Circling Rwy 8, 26 NA at night.</p>	

ASOS 119.275	NEW YORK APP CON 132.75 363.1	AUNICOM 122.725 (CTAF) 0
------------------------	---	------------------------------------



CATEGORY	A	B	C	D
LPV DA	832-1 ³ / ₈		473 (500-1 ³ / ₈)	
LNAV MDA	1080-1	721 (800-1)	1080-2	721 (800-2)
CIRCLING	1200-1 ¹ / ₄	830 (900-1 ¹ / ₄)	1200-2 ¹ / ₂ 830 (900-2 ¹ / ₂)	1240-2 ³ / ₄ 870 (900-2 ³ / ₄)

NE-2, 11 JUN 2026 to 09 JUL 2026

NE-2, 11 JUN 2026 to 09 JUL 2026