

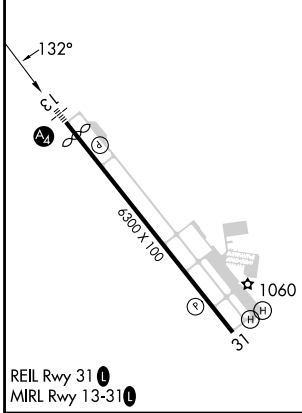
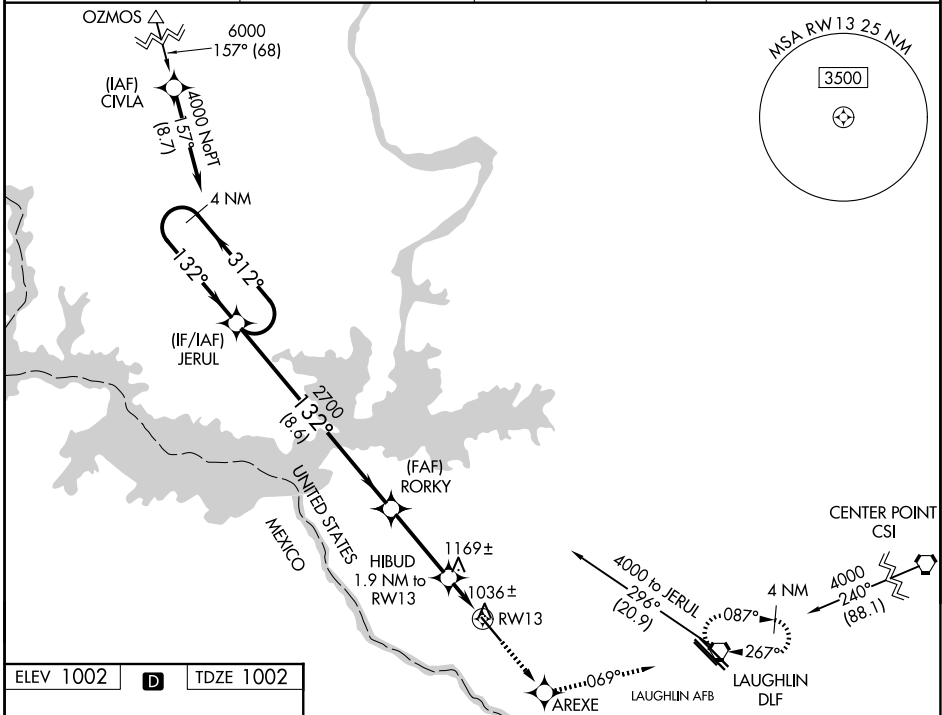
WAAS CH <b>86499</b>	APP CRS <b>132°</b>	Rwy Ldg TDZE Apt Elev	<b>6000</b> <b>1002</b> <b>1002</b>
<b>W13A</b>			

# RNAV (GPS) RWY 13

DEL RIO INTL (DRT)

RNP APCH.	MALS	MISSED APPROACH: Climb to 4000 direct AREXE and on 069° track to DLF VORTAC and hold, continue climb-in-hold to 4000.
<p>⚠ Circling NA for Cat D southwest of Rwy 13-31. When local altimeter setting not received, use Laughlin AFB altimeter setting and increase all DA 30 feet and all MDA 40 feet, increase LPV visibility all Cats, LNAV Cats C and D and Circling Cats C and D visibility 1/4 SM. Baro-VNAV NA when using Laughlin AFB altimeter setting. For uncompensated Baro-VNAV systems, LNAV/VNAV NA below -17° C (2°F) or above 47°C (116°F).</p>		

ASOS <b>118.525</b>	DEL RIO APP CON * <b>119.6 259.1</b>	CLNC DEL <b>120.5</b>	UNICOM <b>122.8 (CTAF)</b>
------------------------	---	--------------------------	-------------------------------



VGSI and RNAV glidepath not coincident (VGSI Angle 3.00/TCH 47).			
4000	AREXE	tr 069°	DLF
4000	AREXE	tr 069°	DLF
4000	AREXE	tr 069°	DLF

CATEGORY	A	B	C	D
LPV DA		1252-3/4	250 (300-3/4)	
LNAV/VNAV DA		1401-1	399 (400-1)	
LNAV MDA	1500-1/2	498 (500-1/2)	1500-3/4	1500-1
			498 (500-3/4)	498 (500-1)
CIRCLING	1500-1	1560-1	1740-2	1740-2 1/4
	498 (500-1)	558 (600-1)	738 (800-2)	738 (800-2 1/4)