

DEL RIO, TEXAS

AL-5268 (FAA)

26078

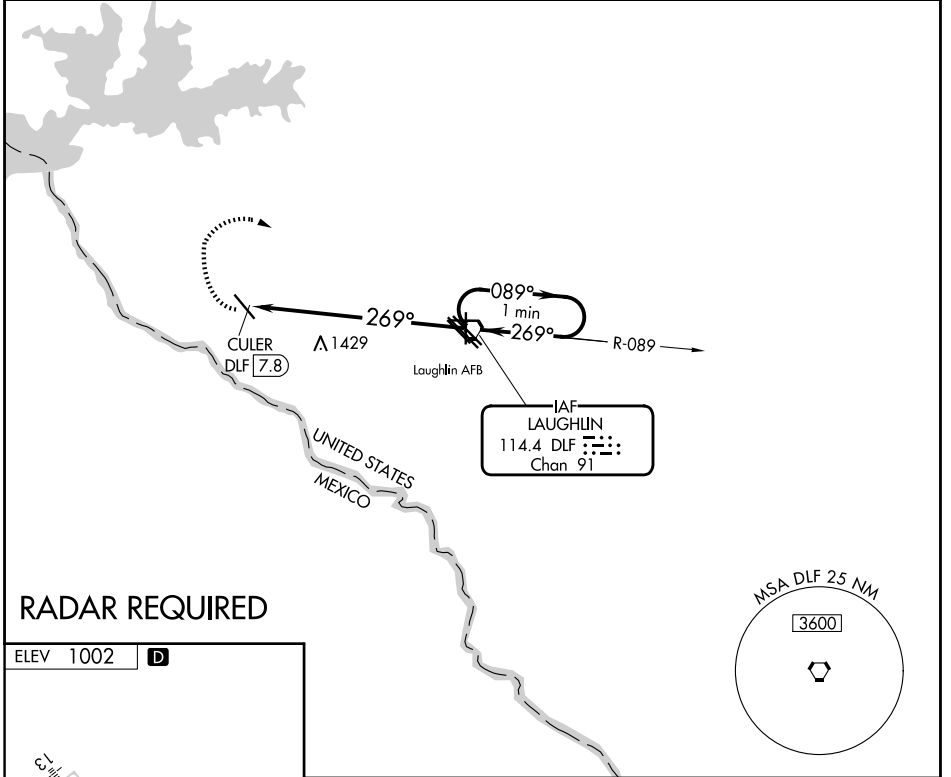
VORTAC DLF <b>114.4</b> Chan <b>91</b>	APP CRS <b>269°</b>	Rwy Ldg TDZE Apt Elev	<b>N/A</b> <b>N/A</b> <b>1002</b>
--	------------------------	-----------------------------	---

**VOR-A**  
DEL RIO INTL (D.R.T)

**▼** Circling NA for Cat D SW of Rwy 13-31. If local altimeter setting not received, use Laughlin AFB altimeter setting and increase all MDAs 40 feet.

**▲** MISSED APPROACH: Climbing right turn to 4000 via heading 340° then right turn direct DLF VORTAC and hold.

ASOS <b>118.525</b>	DEL RIO APP CON * <b>119.6 259.1</b>	CLNC DEL <b>120.5</b>	UNICOM <b>122.8 (CTAF) 0</b>
------------------------	---	--------------------------	---------------------------------

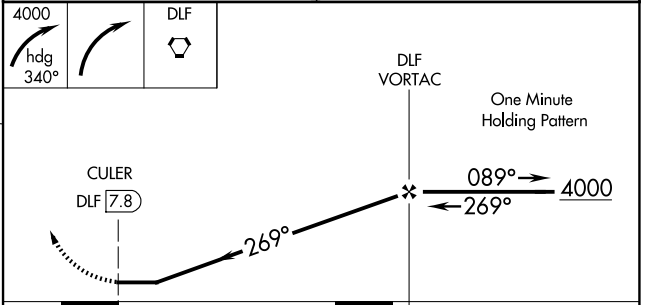


SC-3, 11 JUN 2026 to 09 JUL 2026

SC-3, 11 JUN 2026 to 09 JUL 2026

**RADAR REQUIRED**

ELEV 1002	<b>D</b>
REIL Rwy 31 <b>0</b>	MIRL Rwy 13-31 <b>0</b>
FAF to MAP 7.8 NM	
Knots	60 90 120 150 180
Min:Sec	7:48 5:12 3:54 3:07 2:36



CATEGORY	A	B	C	D
CIRCLING	1780-1 778 (800-1)	1780-1¼ 778 (800-1¼)	1780-2¼ 778 (800-2¼)	1780-2½ 778 (800-2½)

DEL RIO, TEXAS  
Amdt 1A 10SEP20

29°22'N-100°56'W

DEL RIO INTL (D.R.T)  
**VOR-A**